



Alabama State Parks **Business Meeting Facilities**



Alabama's State Parks: Open for Business

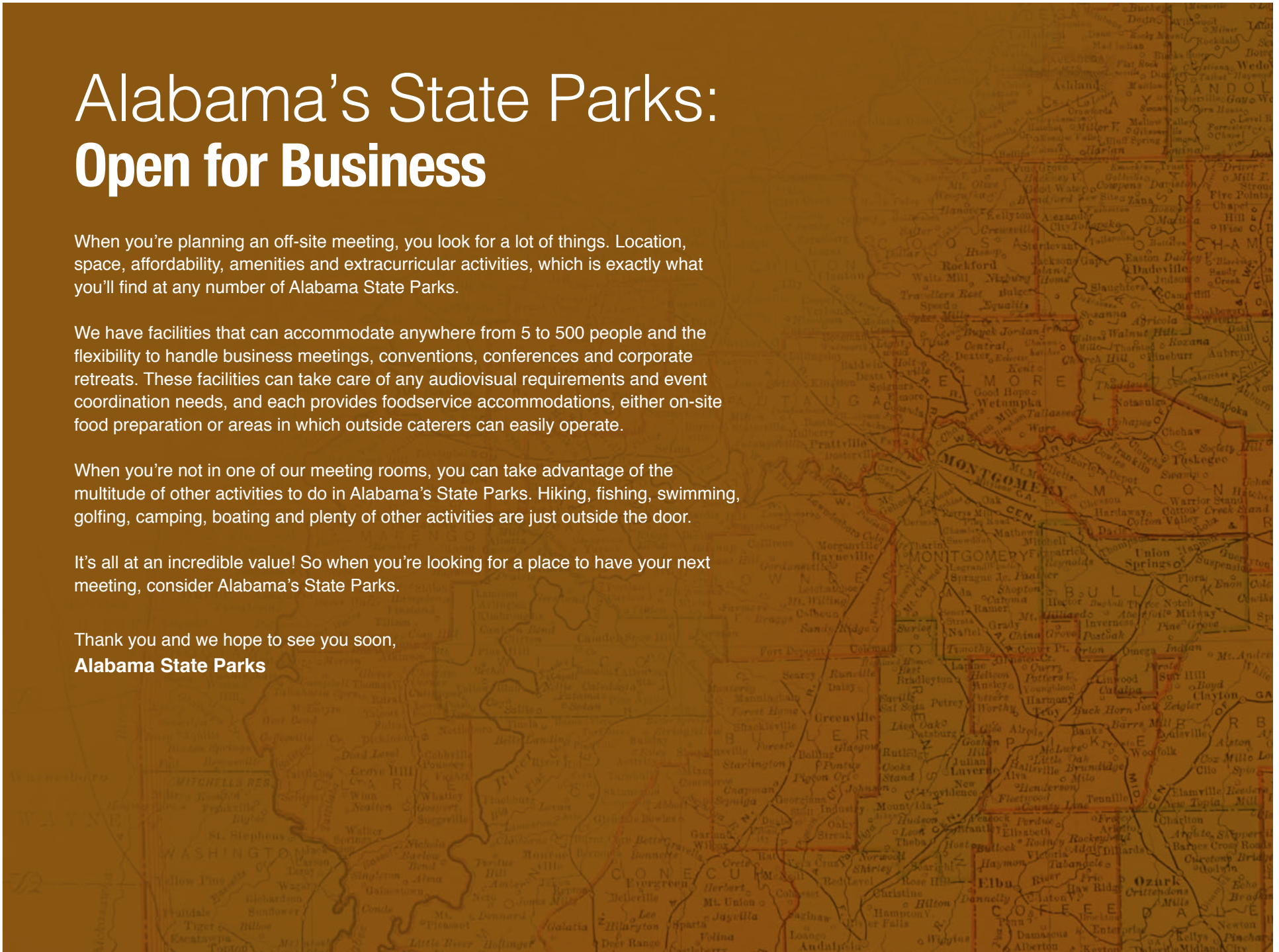
When you're planning an off-site meeting, you look for a lot of things. Location, space, affordability, amenities and extracurricular activities, which is exactly what you'll find at any number of Alabama State Parks.

We have facilities that can accommodate anywhere from 5 to 500 people and the flexibility to handle business meetings, conventions, conferences and corporate retreats. These facilities can take care of any audiovisual requirements and event coordination needs, and each provides foodservice accommodations, either on-site food preparation or areas in which outside caterers can easily operate.

When you're not in one of our meeting rooms, you can take advantage of the multitude of other activities to do in Alabama's State Parks. Hiking, fishing, swimming, golfing, camping, boating and plenty of other activities are just outside the door.

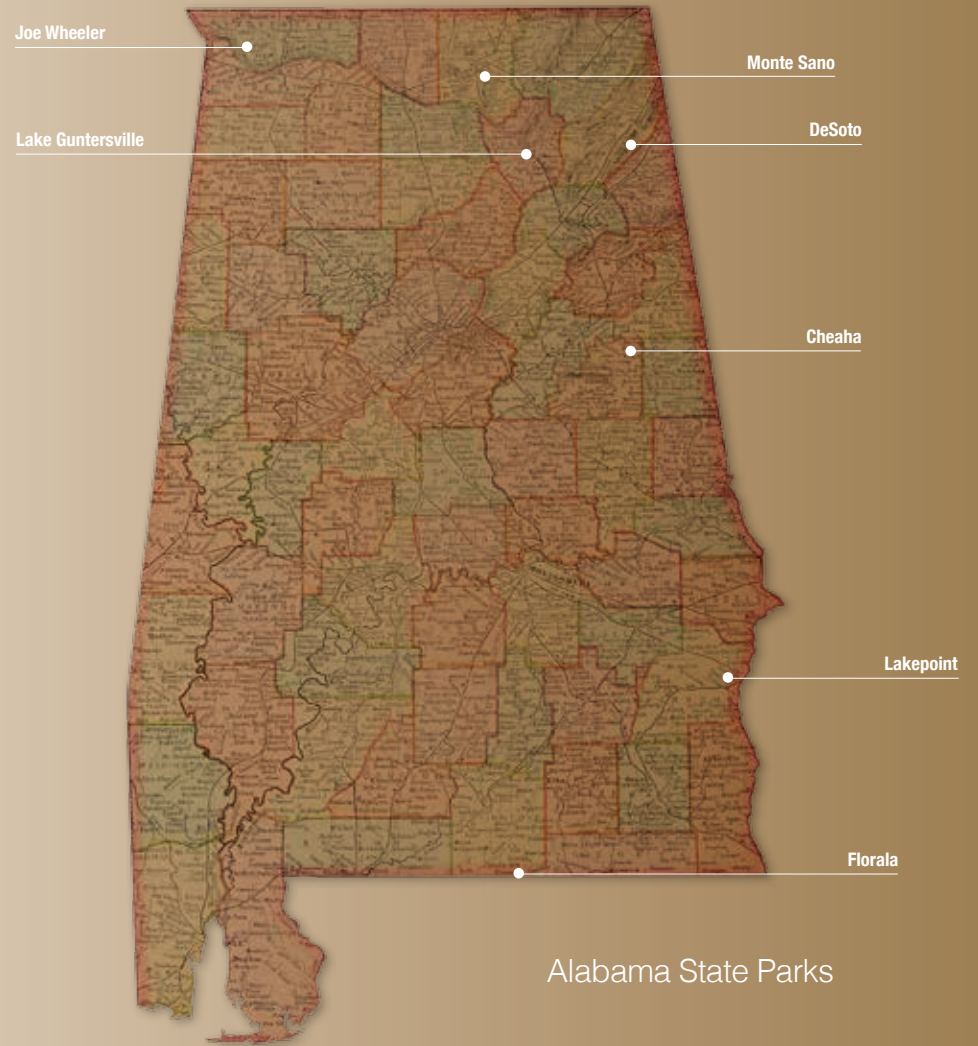
It's all at an incredible value! So when you're looking for a place to have your next meeting, consider Alabama's State Parks.

Thank you and we hope to see you soon,
Alabama State Parks



Contents

Cheaha Resort State Park	4
DeSoto Resort State Park	10
Florala State Park	14
Lake Guntersville Resort State Park	18
Joe Wheeler Resort State Park	22
Lakepoint Resort State Park	28
Monte Sano State Park	32





Cheaha Resort State Park

Cheaha Resort State Park



Visitors can experience breathtaking scenery year-round at Cheaha Resort State Park, which sits at the highest point in Alabama. Views of the surrounding Talladega National Forest from this 2,799-acre mountaintop retreat are stunning, especially at sunset.

The park has an on-site restaurant and offers comfortable hotel rooms, mountainside chalets, cabins, group lodge and camping. Along with inspirational mountaintop views, Cheaha Resort State Park's list of fun activities includes hiking, swimming, fishing and picnicking. The park's convention/meeting facilities provide a refreshing venue in a relaxed business setting away from the hustle and bustle.

The park is about an hour east of Birmingham, just south of Interstate 20 near Oxford and Anniston. Address: 2141 Bunker Loop, Highway 281, Delta, AL 36258; phone: 256-488-5115/800-252-7275; e-mail: cheaha.grouppres@dcnr.alabama.gov Sales: 256-488-5885.

Business Meeting Facilities

The primary business meeting rooms at Cheaha are Bald Rock Lodge and the Cleburne Room. Bald Rock Lodge rents as a whole (lodging and meeting arrangements) and is an ideal setting for a small business group. The Cleburne Room, located adjacent to the hotel's restaurant, provides a beautiful perspective from the top of Cheaha Mountain. Cheaha Restaurant will cater meals and handle any bar your group might need. Ask for the catering menu.

Bald Rock Lodge amenities include:

- 12 bedrooms with private baths; enough to sleep 16
- Private parking
- Meeting and dining facilities for up to 130 people
- Full-service catering is available - *Ask for the catering menu.*
- Audio/Visual equipment
- Outdoor mountain terrace
- Private barbecue and fire pits
- 2 satellite TVs
- 2 fireplaces
- Activities including horseshoes and basketball
- 30' by 60' meeting room (1,800 sq. ft.).
- 10-person conference room available upstairs

The Cleburne Room, located adjacent to the hotel's restaurant, provides a beautiful perspective from the top of Cheaha Mountain.

- 27' by 23' area
- Adjacent to the hotel restaurant
- Capacity of 50
- Stunning mountainside views
- Free Internet
- CD, DVD, TV
- 4-foot screen

Cheaha Resort State Park

Cheaha Resort State Park also is home to the Al Alexander Activities Building, which is set up chapel-style with pews, making it perfect for lectures. Open-air pavilions both on top of the mountain and near Cheaha Lake are popular for informal business retreats. These pavilions include picnic tables, grills, fireplaces and restrooms. Full service catering is also available.

Lodging

The Cheaha Resort State Park Hotel has 30 comfortable hotel rooms, each furnished with a television, free in-room Internet, private baths, irons, air-conditioning and coffee makers. The Lodge also features an outdoor swimming pool. For those looking for something other than traditional hotel accommodations, Cheaha has scenic cabins and chalets with private baths, microwaves, kitchenettes and sweeping mountaintop views of the forest below.

The park's 11 rustic cabins include bathtub/showers, fireplaces, heating and air, linens, microwaves, irons, ironing boards, coffee makers and kitchenettes. (Daily housekeeping service is not available.) Some cabins are available on the western bluff of the mountain where sunsets are simply spectacular.

The park's five chalets include fireplaces, central heating and air, linens, kitchenettes (with microwaves) irons, ironing boards and coffee makers. Each chalet offers the scenic beauty of the outdoors from the porch. TV is available with local stations only.

Room	Banquet	Conference
Oak Hall	112	72-175
Fearn Room		
Dogwood Room	49	90
Pavilions	NA	NA

PRI = Please Request Information at park

* Chapel – Rates are hourly and can be adjusted on weekdays to accommodate a group.

* Bald Rock Lodge – This facility is rented as is as a whole lodging and banquet facility. Day use and season rates may vary. An additional fee is charged for additional set ups.

* Ask about pavilion rentals.

* For meeting banquet room pricing please e-mail Cheaha.groupres@dcnr.alabama.gov or call 256-488-5115.

Dining

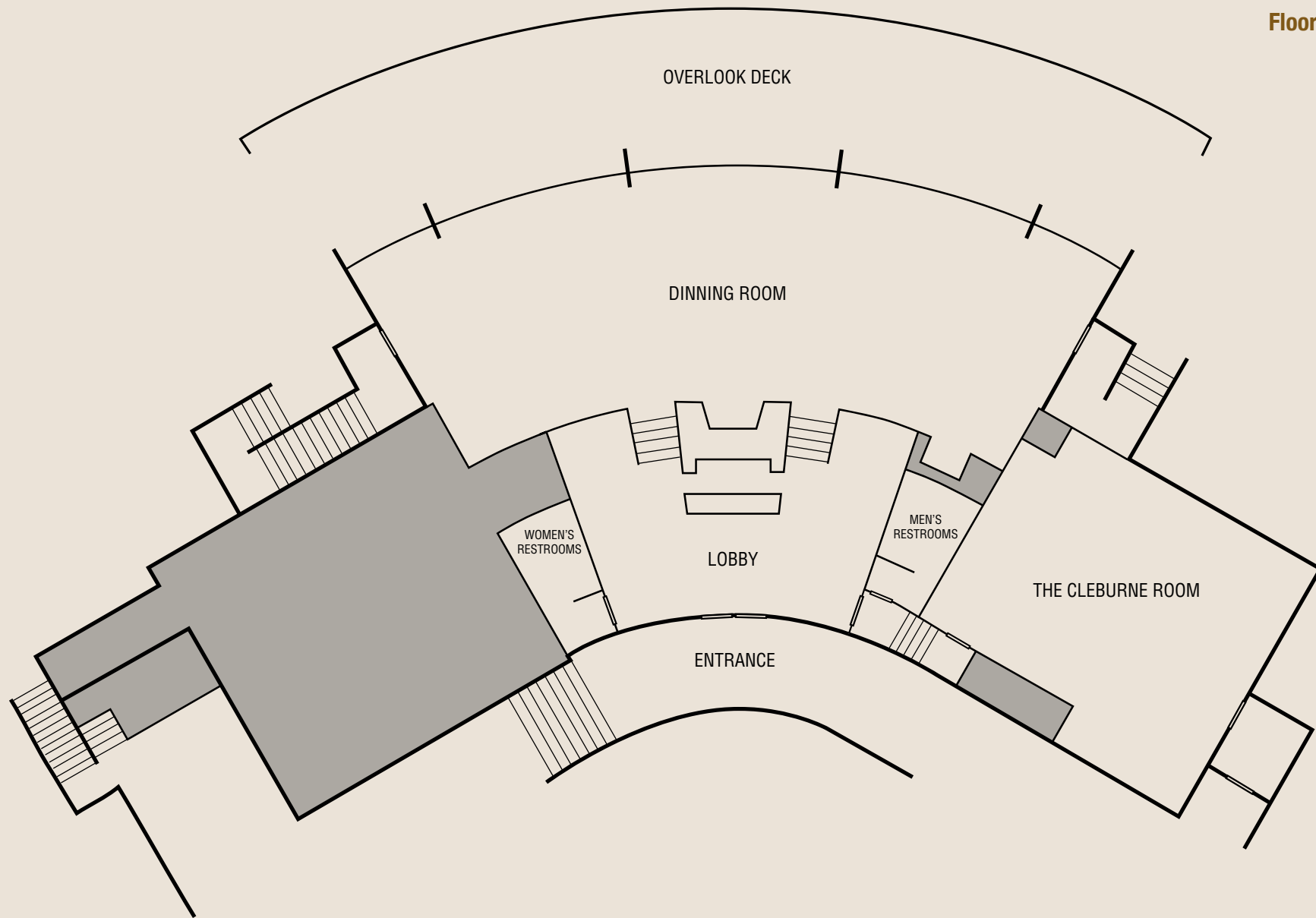
The Cheaha Mountain Restaurant is known for its panoramic dining experience. Wine and beer are available. With gorgeous views of the surrounding Talladega National Forest, it's a favorite of tourists and locals alike. The restaurant also caters to any part of the park that is wheelchair accessible.

Activities

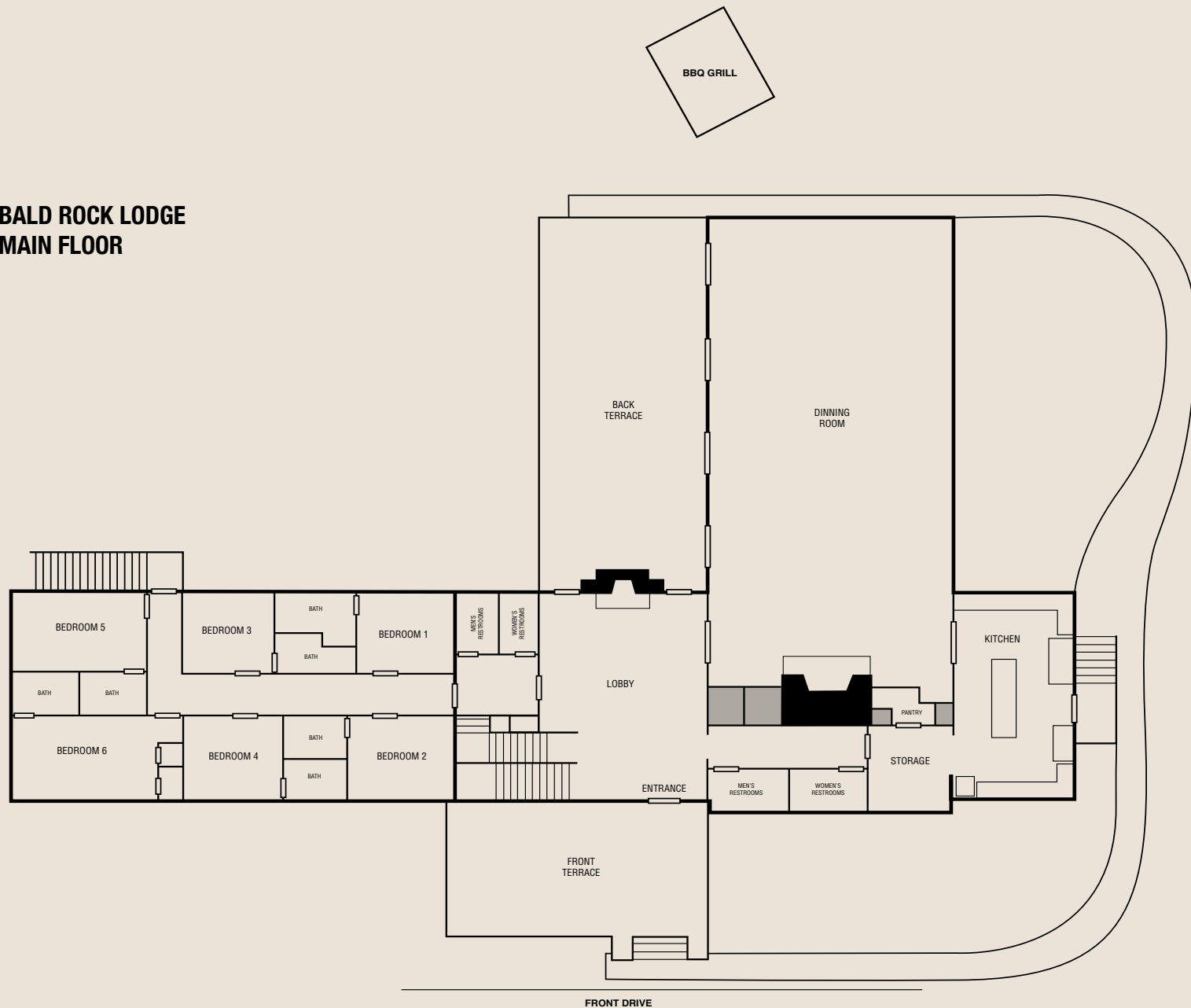
Cheaha Lake is a six-acre lake nestled at the foot of Cheaha Mountain and is home to some of the best recreational bass and bluegill fishing around. Visitors can picnic, swim and even rent paddleboats (on weekends) for a leisurely day on the water. The swimming pool, three to nine feet deep, is available in season.

And, of course, there's incredible hiking. The wheelchair accessible Bald Rock Boardwalk Trail is a quarter mile in length and ends at a scenic overlook, which affords views that stretch halfway to Birmingham. The Pulpit Rock Trail is a moderate hike where you can rappel or just take in the view. The Rock Garden and Lake Trail is the park's most difficult, featuring a 1,000-foot elevation change in the first half mile.



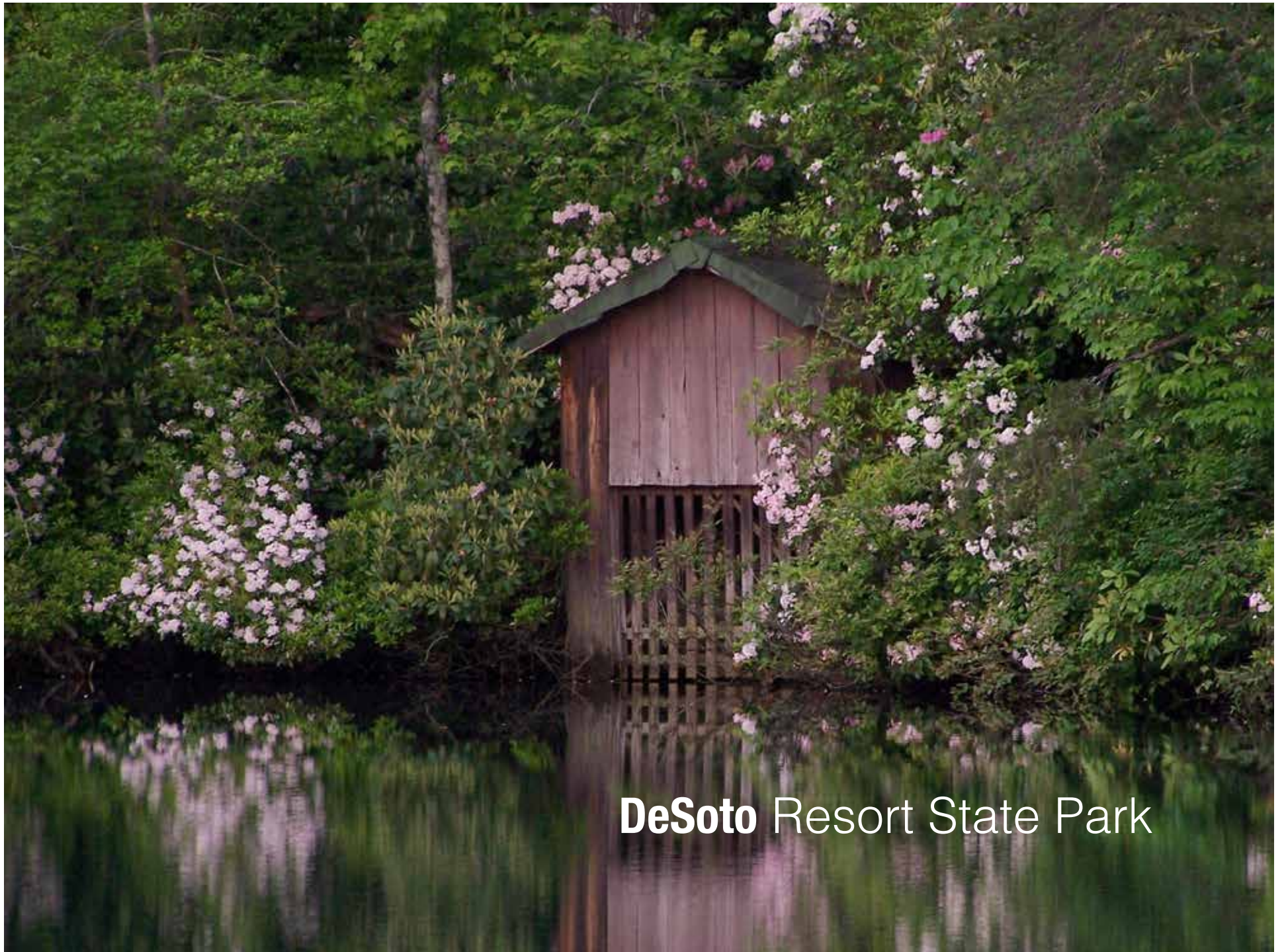


BALD ROCK LODGE MAIN FLOOR



Cheaha Resort State Park





DeSoto Resort State Park

DeSoto Resort State Park



Nestled atop scenic Lookout Mountain in northeast Alabama, DeSoto Resort State Park features a diverse landscape in a picturesque setting. There are 3,502 acres along the scenic Little River that are home to waterfalls, wildflowers and a vibrant ecosystem. We have a large variety of overnight accommodations, and our lodge, pavilions and meeting rooms have everything you need for a successful business gathering.

DeSoto Resort State Park is eight miles northeast of Fort Payne, Alabama, just off of Interstate 59 in the northeastern tip of the state. It is less than two hours from Birmingham and roughly an hour from Chattanooga, Tennessee. Address: 1299 Blalock Dr. NE, Fort Payne, AL 35967; phone: 256-845-5380/800-568-8840; e-mail: Desoto.Functions@dcnr.alabama.gov.

Business Meeting Facilities

DeSoto Resort State Park has three rooms available for business functions. The DeSoto Room and its distinctive stone fireplace can accommodate up to 25 people, the Canyon Room can accommodate up to 40 and the Main Dining Room can seat up to 60. We also have a large outdoor deck available for all types of gatherings, and the outdoor Conservation Civilian Corps Pavilion.

We provide full service catering services for these facilities. Ask for our catering menu.

Meeting room amenities available at an additional charge:

- Audio/Visual equipment for basic speaking and presentation needs.
- 60"x60" screen.
- Wireless Internet.

Lodging

The park lodge has 25 motel rooms with standard amenities such as telephone and cable TV. All motel rooms have microwaves and mini fridges. Mountain chalets feature full kitchens and private decks that afford fantastic views. Our rustic cabins have one bedroom, cable TV, kitchen with basic cookware and a fireplace, while our log cabins have two bedrooms along with central heat and air. Our chalets and cabins all have fireplaces and firewood can be purchased at the lodge.

Dining

The Mountain Inn Restaurant overlooks the west fork of the Little River and is open daily, with a seafood buffet on Friday nights and a lunch buffet on Sundays.

Activities

There are 25 miles of hiking trails, 11 miles of biking trails, and a "Family Loop" that allows children to enjoy riding on rugged, yet flat, terrain. There is also an outdoor swimming pool in the park's picnic area.

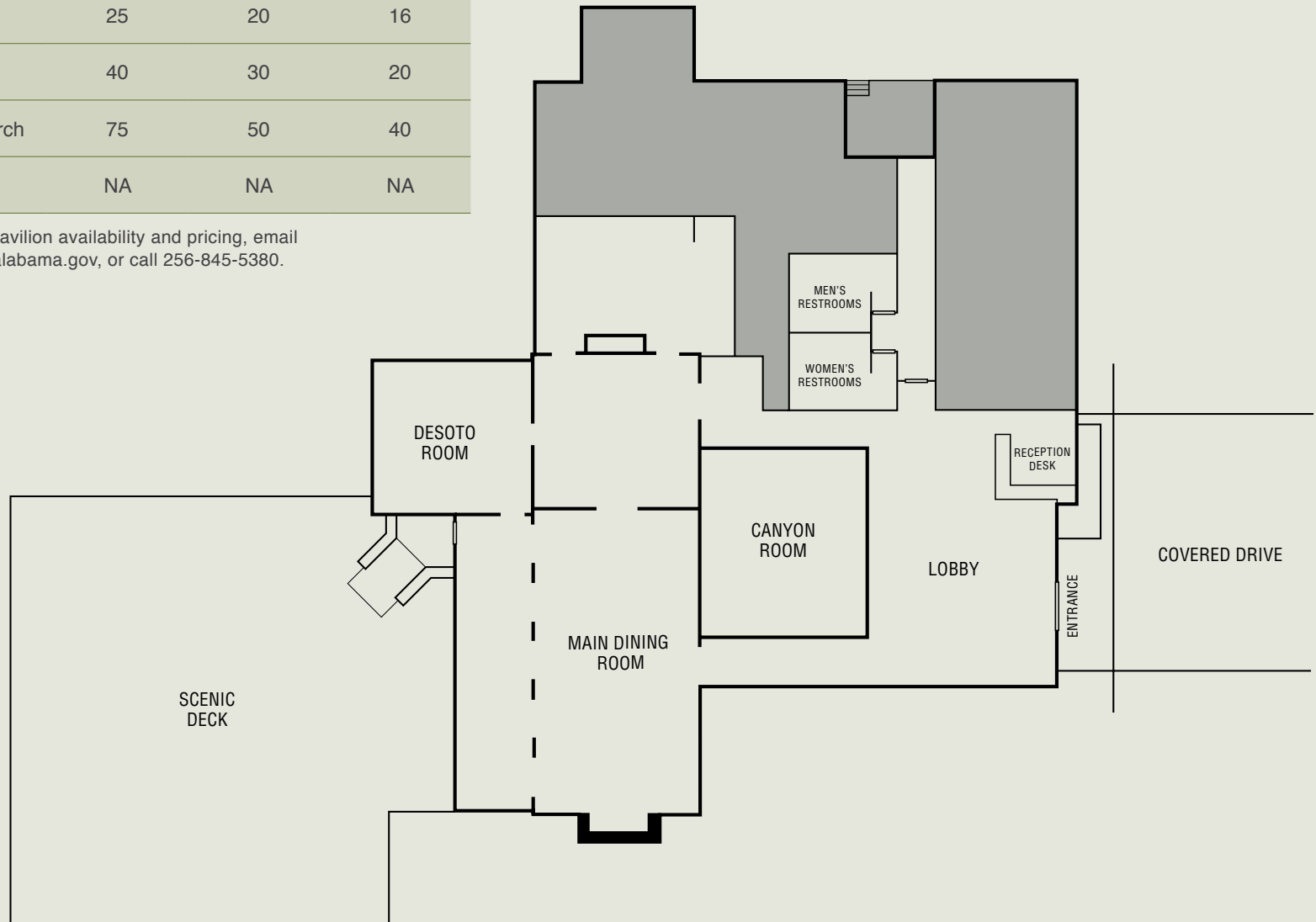
Anglers can take advantage of some incredible fly fishing on the west fork of the Little River and enjoy rod and reel fishing from either a boat or the bank at the small lake in the DeSoto Falls area. Plus we have picnic areas, playgrounds, swimming and the breathtaking DeSoto Falls, which drops 104 feet into a gorge.

DeSoto Resort State Park

Floorplan

Room	Banquet	Theater	Classroom
DeSoto Room	25	20	16
Canyon Room	40	30	20
Main Dining Room & Porch	75	50	40
Pavilions	NA	NA	NA

* For meeting facility and pavilion availability and pricing, email DeSoto.functions@dcnr.alabama.gov, or call 256-845-5380.



DeSoto Resort State Park



Florida State Park



Florala State Park



Floral State Park

Floral State Park is located in south central Alabama on the Florida/Alabama state line. The park stretches along the shores of the beautiful 500-acre Lake Jackson. This compact 40-acre park offers swimming, fishing, picnicking and camping.

The park has a nice climate for campers seeking to avoid those harsh winter months up north. Address: 439 Victoria Lane, Floral, AL 36442; phone: 334-858-6425; email: Floral.StPk@dcnr.alabama.gov

Business Meeting Facilities

The park has a new meeting facility, the Rodney J. Evans Memorial Building. This building provides two business meeting rooms – a main room with over 6,200 square feet of space, and a smaller 400-square-foot room. These rooms can be set up in a classroom or banquet style setting with round tables for groups from 20 to 200.

A 50 percent deposit is required at the time of booking, with the remainder to be paid the day of use. This facility is also perfect for weddings, family or class reunions.

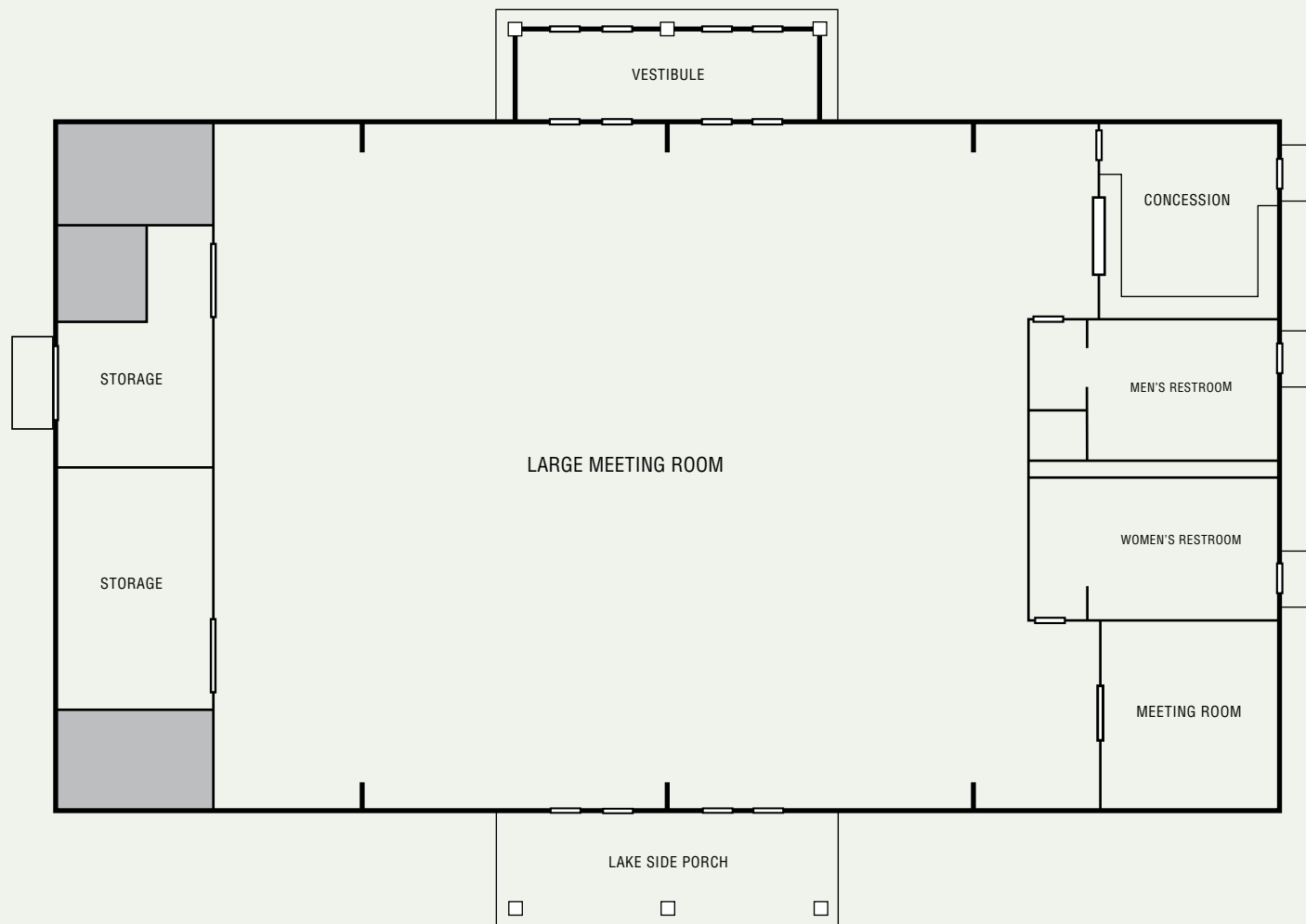
Several pavilions in the park are available for rent to accommodate company picnics, parties and family gatherings.

Activities

The park playground is located near the meeting facilities as well as the swimming area. The park also offers a nice walking trail along the banks of the lake that includes boardwalks.

* For meeting facility and pavilion availability and pricing, email Floral.StPk@dcnr.alabama.gov, or call 334-858-6425.

Floorplan



Floralia State Park



Lake Guntersville Resort State Park



Lake Guntersville Resort State Park



Lake Guntersville Resort State Park overlooks the scenic 69,000 acre Guntersville Reservoir, has more than 6,000 acres of natural woodlands and provides unbelievable views. A championship golf course, boat rentals, a beach complex, fishing and hiking, are among the amenities guests will enjoy. Cabins, chalets and a lodge with mountaintop resort hotel accommodations provide guests with a variety of lodging options. Pavilions are also available.

Located in northeastern Alabama, Lake Guntersville Resort State Park is situated along the banks of the Tennessee River in Guntersville. It is about 45 minutes southeast of Huntsville and approximately an hour and 45 minutes northeast of Birmingham. Address: 1155 Lodge Drive, Guntersville, AL 35976; phone: 256-571-5440/800-548-4553; e-mail: Guntersville.Lodge@dcnr.alabama.gov.

Business Meeting Facilities

The Lake Guntersville Resort State Park Conference Center has seven meeting and banquet rooms that provide more than 13,800 square feet of meeting space. A full service restaurant located on the lower level of the Lodge affords guests the opportunity to dine on their own during their event, as well as provide banquet services to the meeting rooms. Meeting rooms are listed on the following page.

Meeting Room amenities can include *(additional fees apply)*:

- Mobile/portable sound systems that offer a podium microphone, a hand-held wireless, or wireless lapel microphone.
- Portable projection screens
- Wall-mounted recessed screen, 8' by 10'
- CD, DVD capabilities
- Projectors (each of which is cable-ready)
- Large screen TVs
- Wireless Internet
- Portable stages

Lake Guntersville Resort State Park

Lodging

The Guntersville Lodge has 99 hotel rooms and 13 suites, all of which are non-smoking rooms. Seventy-two of the lodge rooms and all suites have a magnificent view of Lake Guntersville. Dogs are allowed in pet-friendly units. Each hotel room and suite has an in-room refrigerator, microwave, hair dryer, coffee, coffee pot, TV, iron and ironing board. The facility also includes an on-site exercise room, steam room, gift shop, saunas and a game room. Other accommodation options include:

Cabins: Fifteen lake-view cabins, with a capacity of one to six people, are equipped with a sitting room with cable TV, kitchen, two baths and two bedrooms, one with a king bed and the other with two double beds.

Chalets: All chalets sit at the pinnacle of Taylor Mountain. Seventeen chalets sleep one to six people and are equipped with a living room, cable TV, DVD player, kitchen, bath and two bedrooms. One bedroom has a king bed and the other has two double beds. Two additional chalets are handicap accessible and are equipped with one king bed and one double or two double beds. Information about our Honeymoon and Executive Chalets are available at www.alapark.com.

Dining

The Pinecrest Dining Room is open for breakfast, lunch and dinner throughout the year. We specialize in buffet dining and have a full menu as well. Patrons may enjoy the panoramic view of Lake Guntersville. An adjoining dining room is available for private parties.

Activities

Our 18-hole championship golf course is open year-round. Our 36 miles of hiking and biking trails offer a variety of challenges and feature some fantastic birding. And of course, the lake can give you plenty of options. There are boat rentals, fishing, swimming and even a beach complex with a large pavilion.

Room	Banquet	Theater	Classroom
Grandview Ballroom	300	450	250
Camellia	180	280	170
Goldenrod	150	240	150
Boardroom	N/A (pre-set as a boardroom to seat 20)		
Dogwood	40	45	32
Azalea III	40	32	32
Azalea II	20	18	12
Pavilions	NA	NA	NA

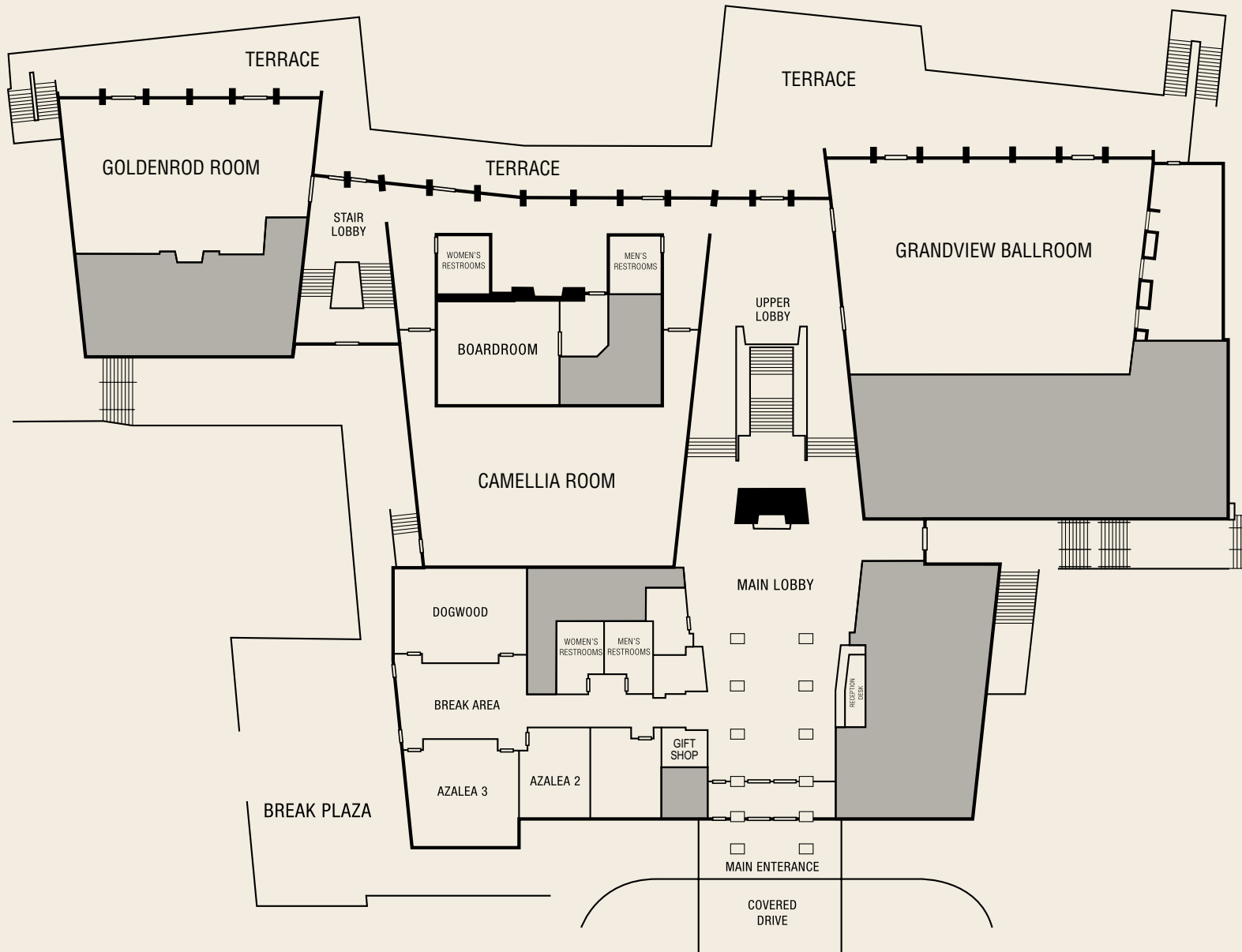
Room capacity varies according to each group's set up and equipment rental needs.

*For pricing on meeting rooms and pavilions, email Guntersville.Lodge@dcnr.alabama.gov, or call 256-571-5440.



Lake Guntersville Resort State Park

Floorplan



Joe Wheeler Resort State Park



Joe Wheeler Resort State Park



Joe Wheeler Resort State Park is known for plenty of water, woods and wildlife. Groups of all sizes can choose from any number of activities at this showplace park situated on the bank of Wheeler Lake. Boating, fishing and golf are just the beginning. From weekend getaways to group gatherings to larger conventions, Joe Wheeler can meet all of your needs.

Joe Wheeler Resort State Park is located west of Interstate 65 in North Alabama, roughly one hour from Huntsville and two hours from Birmingham and Nashville. Address: 4401 McLean Dr. Rogersville, AL 35652; phone: 800-544-5639/256-247-5461; e-mail: JoeWheeler.Lodge@dcnr.alabama.gov.

Business Meeting Facilities

The park offers amenities for any kind of business group function. The park has five primary meeting rooms that accommodate anywhere from 30 to 500 people. The Convention Center is the largest, holding up to 300 for a reception or banquet, 200 for classroom seating and 500 for theater seating. The River Room features a huge stone fireplace and offers a stunning view of the lake. It also can be used in conjunction with the patio. Pavilions are also available for outside events. Meeting rooms are listed on the following page.

Meeting Room capabilities include:

- Audio capability and ceiling speakers in all meeting rooms
- Podiums, wired and wireless microphones, speakers and lapel microphone are portable and available for use in any of Joe Wheeler's meeting rooms.
- CD/DVD players, an overhead projector and PowerPoint projector are portable and can be used in any meeting room. A 10' by 8' wall-mounted screen is available for the Convention Center and Willow Room, and a portable stand-up screen is available for the River Room.
- High speed internet access with wireless capabilities in the Convention Center, which includes the Willow and Cypress rooms. Wireless internet is available in the main lobby and dining room area of the hotel and will soon be available in all areas of the park.
- There is phone service in all meeting rooms.
- Risers, 1' high and 8' long, are available for any meeting room.

Joe Wheeler Resort State Park

Lodging

The Joe Wheeler Resort Lodge has 75 rooms, all of which have a balcony view of picturesque Wheeler Lake. Each room in the stone and wood lodge has two Queen-size beds. Executive suites each have a kitchenette and whirlpool tub.

The park also has 10 lakeside cottages in the mouth of First Creek. Each of the cottages has two or three bedrooms, and all have TVs with satellite reception and DVD players in the great room. Cottages have central heat and air, fireplaces, a stove, microwave, refrigerator, dishwasher, toaster and coffee maker. Each cottage is supplied with linens, tableware and cookware and offer views and access to both Wheeler and Wilson lakes.

The park's 26 cabins are located on the south side of the Tennessee River near Wheeler Dam. Cabins are equipped for basic housekeeping and cooking. Linens are provided, and TVs with basic Dish Network programming are available.

Elk River Group Lodge is ideal for larger group get togethers. It has a large common area, a commercial kitchen, 13 bedrooms and a maximum overnight capacity of 30 people.

Room	Banquet-longs	Banquet-rounds	Theater	Classroom
Convention Center	300	200	500	160
Cypress Room	150	120	200	100
Willow Room	60	56	100	50
Cedar Room	30	32	40	N/A
River Room	150	120	175	100
Pavilions	NA	NA	NA	NA

* For pricing on meeting rooms and pavilions, email JoeWheeler.Lodge@dcnr.alabama.gov, or call 256-247.5461.

Dining

Daniella's in the Park Restaurant serves three meals a day and is known for its fabulous Sunday brunch, Saturday night seafood buffet and Friday night prime rib buffet.

Activities

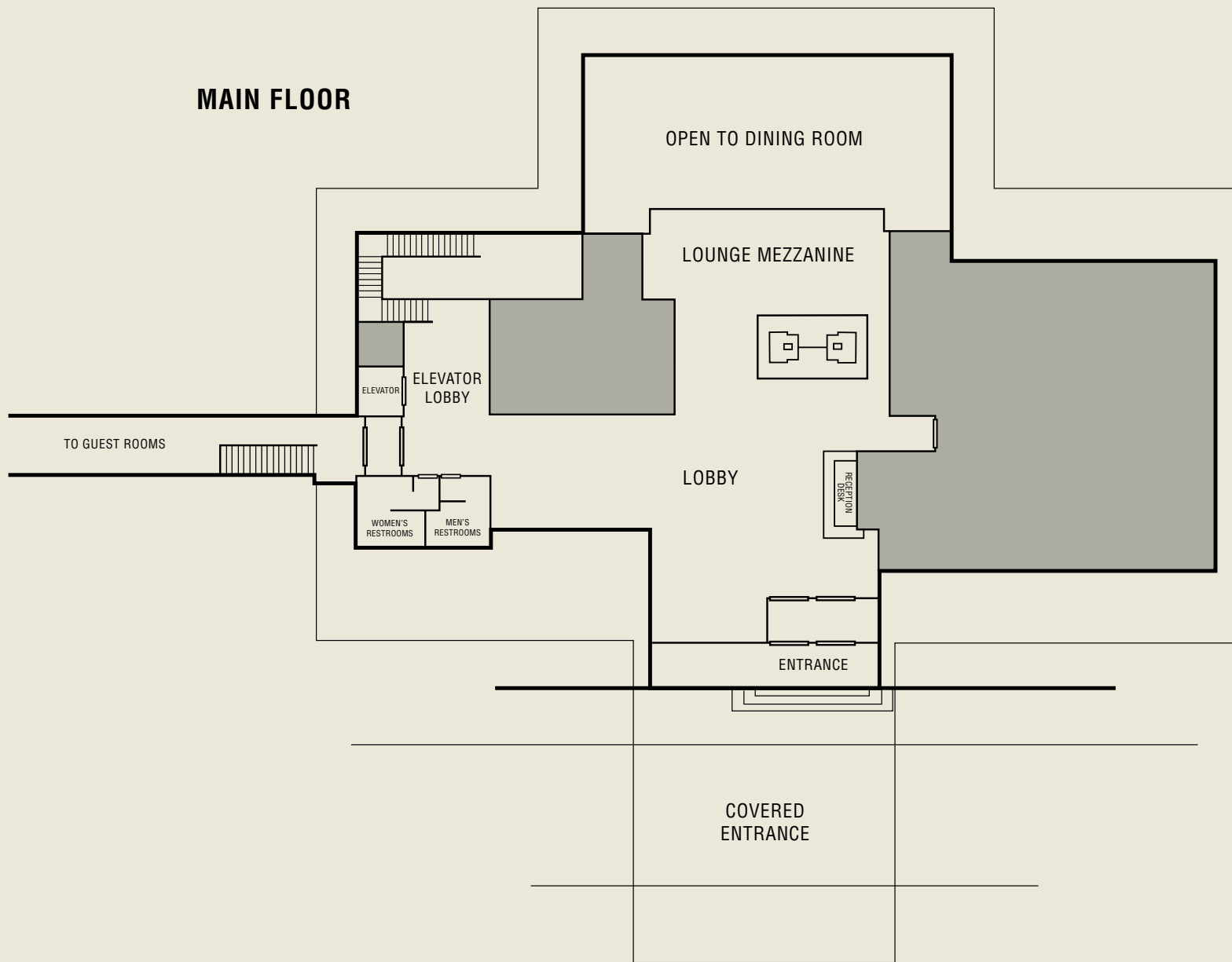
To really enjoy the lake, we have boat rentals for a half-day or full day. You can cruise around on a pontoon boat, wet a line from a fishing boat or just paddle around the marina in one of our paddle boats. There's an 18-hole championship golf course designed by Earl Stone, hiking trails through the woods and along the water's edge, and a picnic area to enjoy a leisurely lunch.

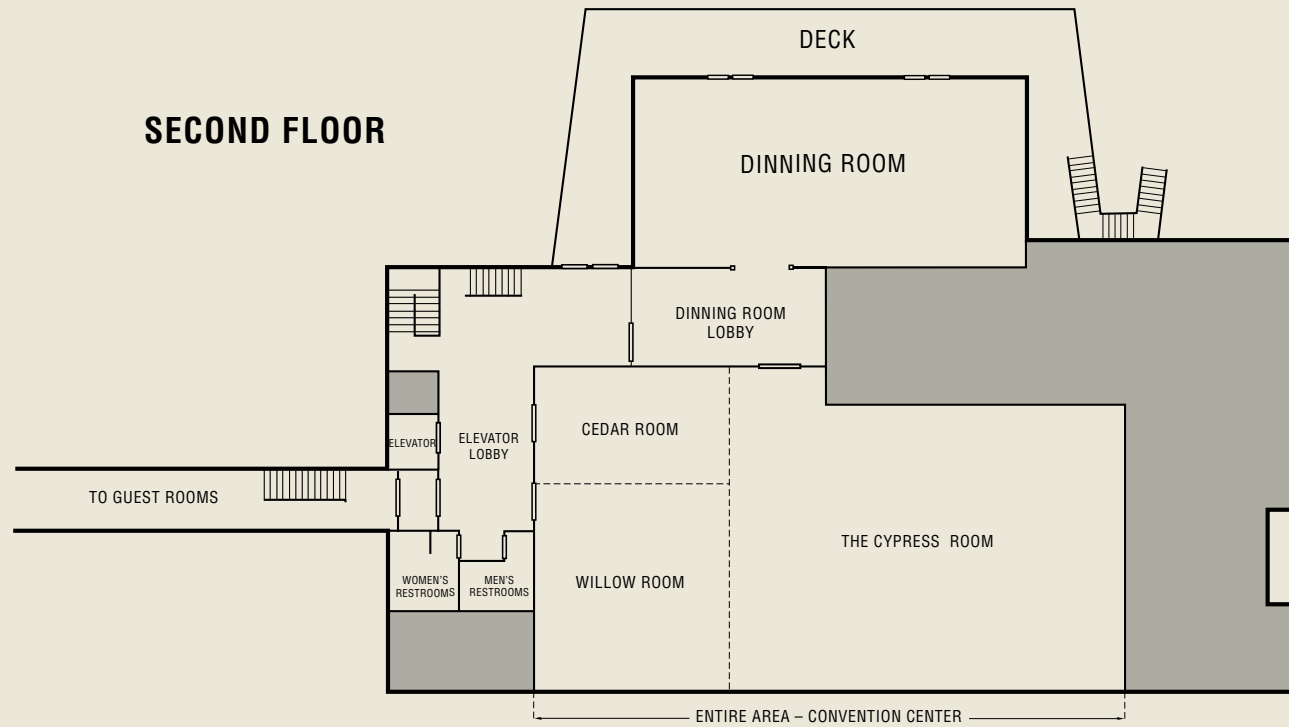


Joe Wheeler Resort State Park

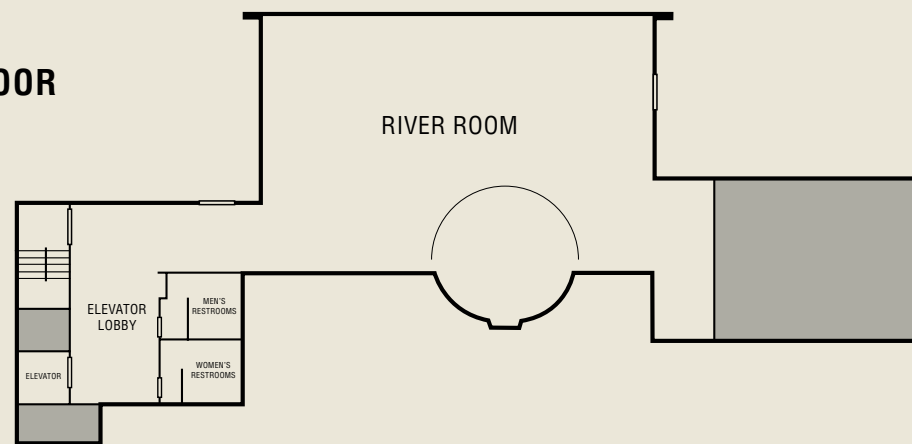
Floorplan

MAIN FLOOR





GROUND FLOOR



Joe Wheeler Resort State Park





Lakepoint Resort State Park

Lakepoint Resort State Park



This picturesque 1,220 acre park is located on the banks of 45,000 acre Lake Eufaula, otherwise known as the “Bass Capital of the World.” The park has a lodge, restaurant, convention center, modern campground, vacation cabins and lakeside cottages, picnic areas, 18-hole golf course and a marina complete with launch facilities and boat slips. Pavilions are also available.

Lakepoint is nestled in the southeastern corner of Alabama, just outside of Eufaula on Highway 431. Address: 104 Lakepoint Drive, Eufaula, AL, 36027; phone: 334-687-8011/800-544-5253; e-mail: LakePoint.StPkLodge@dcnr.alabama.gov.

Business Meeting Facilities

Lakepoint Resort Lodge has nine rooms available for business meetings and functions, and several of them overlook the water. The park can comfortably accommodate 10 to 500 people for business function meetings. The back deck of the lodge provides beautiful views of Lake Eufaula. Meeting rooms are listed on the following page.

Meeting room capabilities include:

- Portable sound system that offers podium microphones, hand held wireless or wireless lapel microphones in the Magnolia and Riverside meeting rooms.
- Maple, Elm and Cottonwood meeting rooms have built-in sound systems.
- Video resources include two projectors, a CD/DVD player, and DVD players – all of which are portable.
- Lakepoint’s 12 risers are 8” high, 4’ wide and 6’ long and are all portable.
- Internet services are available in the banquet facilities.

Lakepoint Resort State Park

Lodging

Our newly renovated Lodge features 101 guest rooms, six of which are executive suites. Each is furnished with a 32" flat screen TV, refrigerator, coffee pot, iron and hair dryer. The executive suites each have a kitchenette, dining area and separate sitting area, with two flat screen TVs.

We also have eight lakeside cottages that have from one to four bedrooms. They have hardwood floors, slate tile kitchens and carpeted bedrooms. Tucked back into the woods are our 29 cabins, each complete with a kitchen, dining area, fireplace, carpeting and central heat and air. They also have a charcoal grill, picnic table and Dish Network TV service.

Dining

The Water's Edge Restaurant overlooks beautiful Lake Eufaula and features a full menu for breakfast, lunch and dinner. The restaurant can cater outdoor events throughout the park that includes a full barbecue menu. The Pier's End Bar & Grill offers a smaller, more casual atmosphere and can provide portable bar service with a full line of spirits for special events in the park. Special events can be booked through the Sales Office at the Lakepoint Resort Lodge. The Marina Grill can prepare box lunches for picnics, golf outings or fishing trips.

Activities

We're known for our world-class bass fishing, and there are tournaments held nearly every weekend. If you need a boat, we can help with that, too. Boats are available for half-day and full-day rentals. If you'd rather stay on dry land, we have an 18-hole championship golf course, a picnic area, playground and plenty of hiking trails.

Room	Banquet	Theater	Classroom
Grand Ballroom	400	500	200
Elm	100	150	100
Magnolia	120	125	100
Maple	65	100	75
Cottonwood	75	125	50
Riverside A & B	175	NA	NA
Riverside A	50	75	40
Riverside B	125	175	100
Southern Pine Board Room	14	14	14
Pavilions	NA	NA	NA

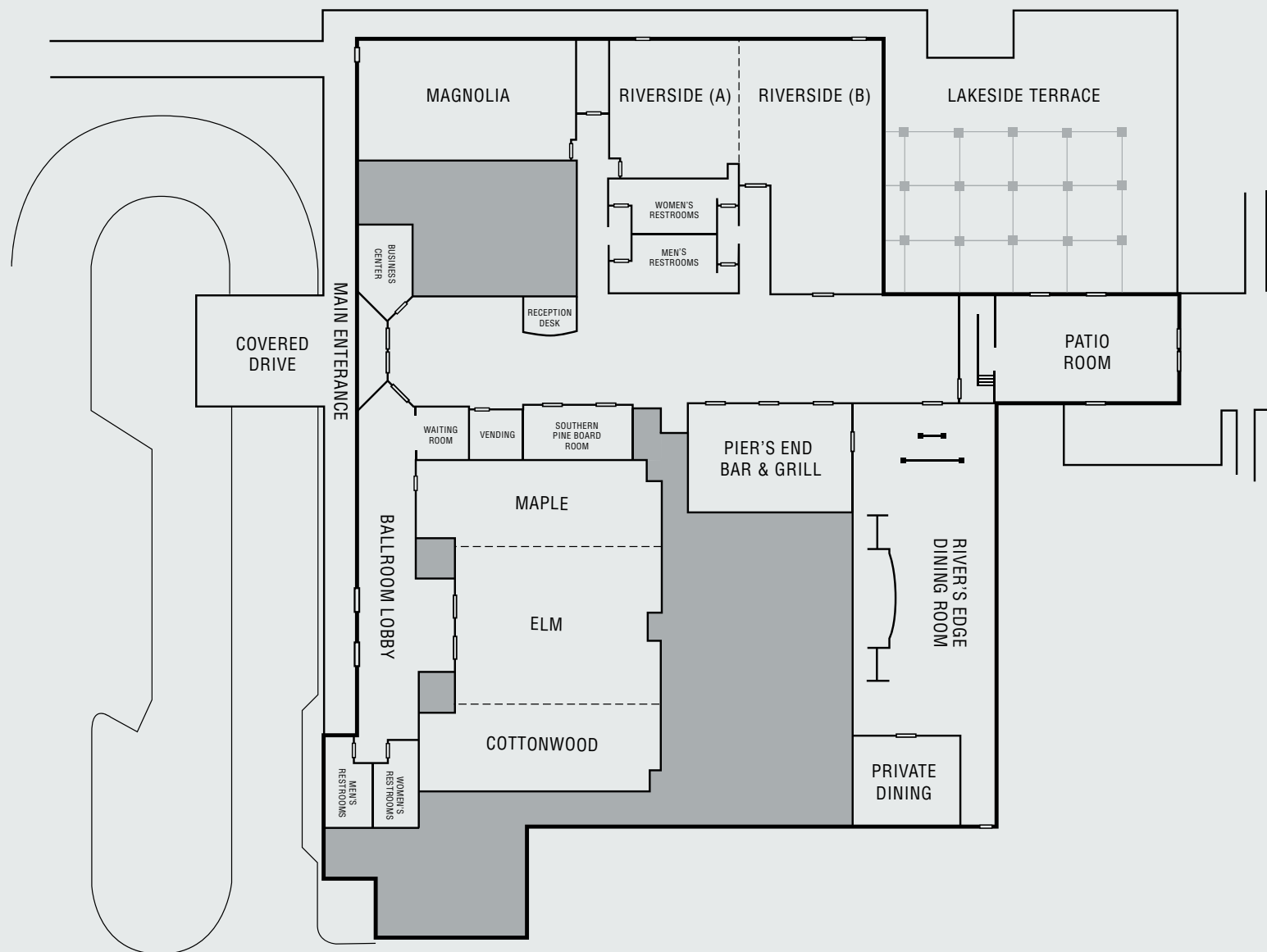


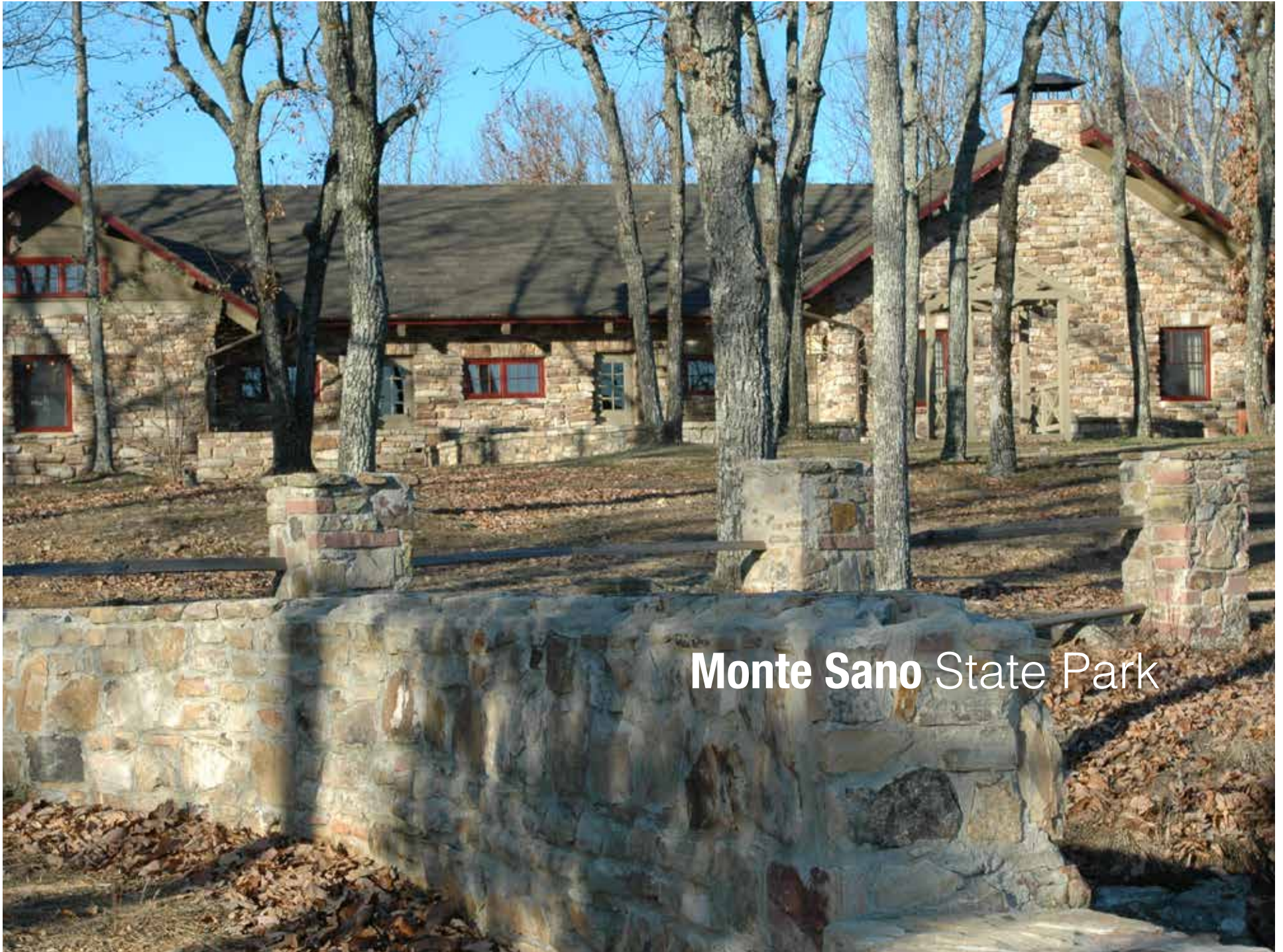
Room fees are waived for events in which full meals are served. Prices are subject to change.

* For meeting rooms and pavilion pricing please email lakepoint.StPkLodgep@dcnr.alabama.gov or call 334-687-8011.

Lakepoint Resort State Park

Floorplan





Monte Sano State Park

Monte Sano State Park



Monte Sano, which is Spanish for “Mountain of Health,” rises more than 1,600 feet above sea level overlooking Huntsville. The serene mountain setting and incredible vistas in north Alabama make for a perfect business meeting getaway.

Our 2,400 acre park has everything you’re looking for. It is on the eastern edge of Huntsville, approximately 20 miles east of Interstate 65. Address: Monte Sano State Park, 5105 Nolen Avenue, Huntsville, AL, 35801; phone: 256-534-3757; e-mail: Monte.SanoStPk@dnr.alabama.gov.

Business Meeting Facilities

Meeting rooms at Monte Sano State Park feature rustic stone and are beautifully furnished. Monte Sano’s catering kitchen makes Oak Hall ideal for business dinners and retirement parties. Oak Hall is the largest of the rooms at Monte Sano Lodge. It can accommodate up to 112 people for banquets and between 72 to 175 in a conference setting. Easy access to Monte Sano’s catering kitchen make Fearn Hall ideal for business dinners.

The Dogwood Room holds from 49 to 90 people, depending on the function. It is equipped with a podium and screen and provides Internet access. It holds eight round tables for banquets or seven rectangle folding tables for conferences.

The O’Shaughnessy Package includes rental of the entire lodge, which provides these amenities:

- The accommodation of up to 220 people
- Full use of the catering kitchen
- 72-120 chairs, depending on the function
- 15 round tables for banquets and up to 20 rectangle folding tables for conference meetings
- Use of dual fireplaces, with wood, upon request

Lodging

Monte Sano has 14 rustic stone cabins, each with a hand-crafted stone fireplace and wood floor. There is a side screen porch for taking in the fresh mountain air and enjoying breathtaking panoramic views of the natural surroundings.

Activities

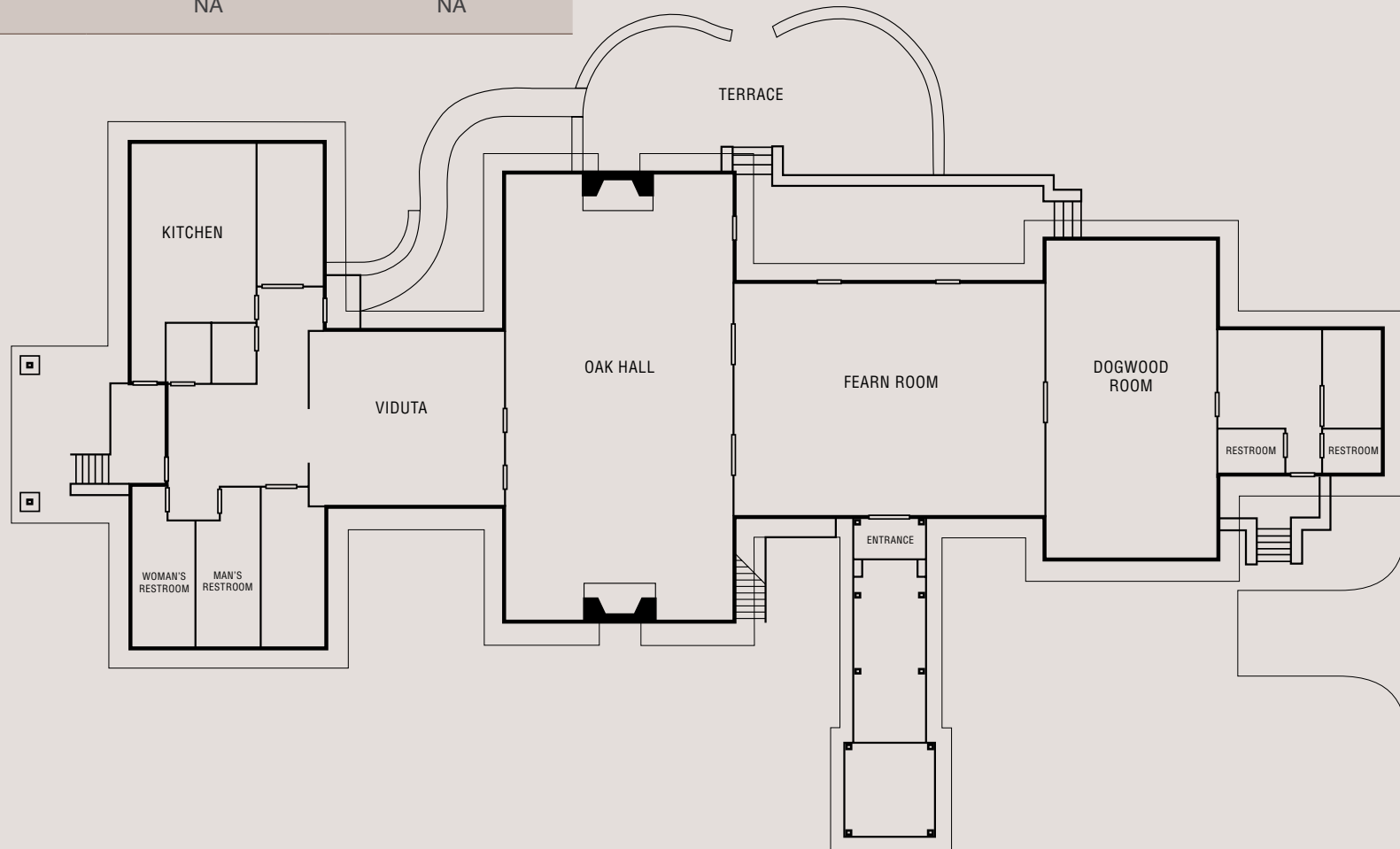
We have a brand new playground area for the kids, two large picnic pavilions, a smaller picnic pavilion and the more open Y.A.C.C. pavilion. There are 14 miles of hiking/biking trails that include the North Plateau Loop and South Plateau Loop with mild elevation changes. For the more serious hikers and bikers there’s the Mountain Mist and McKay Hollow trails.

Monte Sano State Park

Room	Banquet	Conference
Oak Hall	112	72-175
Fearn Room		
Dogwood Room	49	90
Pavilions	NA	NA

* For meeting, pavilion and banquet room pricing please e-mail Monte.SanoStPk@dcnr.alabama.gov or call 256-534-3757.

Floorplan





Scan the code to download your State Parks app today!

Developed by: PocketRanger.com



Keep up-to-date with Alabama State Parks on Social Media.

The Alabama Department of Conservation and Natural Resources does not discriminate on the basis of race, color, religion, age, gender, national origin or disability in its hiring or employment practices nor in admission to, or operation of its programs, services or activities.



64 North Union Street, Suite 538
Montgomery, Alabama 36130