

A scenic view of a lake with a white tower in the background. The tower has "WIND CREEK" written on it. The water is dark blue with white foam from a boat's wake. The sky is overcast with grey clouds. The background features a line of trees, including tall pines and some bare deciduous trees.

# A SNAPSHOT OF WIND CREEK STATE PARK

**EST. 1982**

# WELCOME TO WIND CREEK STATE PARK

Nestled along the shores of Lake Martin, Wind Creek State Park sprawls across 1,444 acres of forest and waterfront in Tallapoosa County, just south of Alexander City. This lakeside oasis boasts one of the largest state-owned campgrounds in the nation, with many of its improved campsites just steps away from the water's edge. Wind Creek also features camping cabins for guests looking for a more deluxe vacation experience, as well as an equestrian campground for those seeking to share their camping experience with their riding companions.

Whether staying overnight or visiting for the day, guests will find a myriad of activities to enjoy at Wind Creek! The park features over thirty miles of multi-use trails, giving hikers, horsemen, and cyclists the opportunity to experience stunning views of Lake Martin as well as longleaf pine forests. Guests can also enjoy this Treasured Alabama Lake by splashing around at the beach, fishing from the shore or pier, or renting a boat from the marina store. Those looking for a little adventure can also check out the park's archery range or soar through the treetops on a zipline canopy tour.

Wind Creek is also a favorite spot for nature enthusiasts. As a stop on Alabama's Piedmont Plateau Birding Trail, the park is a prime location for a variety of native bird species, including Bald Eagles, Osprey, Summer Tanagers, Chimney Swifts and more! For those seeking to expand their knowledge of Alabama's flora and fauna, Wind Creek's interpretive staff offer conservation-based educational programs, hands-on activities, and guided hikes to guests of all ages. With opportunities across so many facets of outdoor recreation, there is truly something for everyone at Wind Creek State Park!





## IMPORTANT PARK INFORMATION

### ADDRESS

4325 Alabama Highway 128  
Alexander City, AL 35010

### PHONE NUMBER

256-329-0845

### HOURS

Park Open Daily: 7a.m. to dark  
Reservation Office: Mon - Fri 8 a.m. to 4 p.m.





## **GATE ADMISSIONS**

**Age 0-3: Free**

**Age 4-11: \$2**

**12 and older: \$5**

**Senior Citizens (62+): \$2**

**Veterans & Active Military: Free (Please show ID)**

**Boat Launch: \$5**

## **ANNUAL PASSES**

**Senior/Disabled: \$55**

**Individual Pass 12 & Older: \$105**

**Family Pass up to 6: \$155**

**Alabama State Parks are self-funded. Every dollar spent in a state park stays in a state park.**

**Thank you for your support!**

# A BRIEF HISTORY OF WIND CREEK

Wind Creek State Park was originally a private recreation facility for Russell Corporation employees and their families. Mr. Robert A. Russell, the founder and director of Wind Creek, began to see the need to open the recreation area to the general public. After his death in 1969, the State of Alabama purchased the area with the strict stipulations that the park would be completely renovated and operated as a state park. Wind Creek State Park has become a reality due to the dedication of Robert A. Russell's love for nature and the preservation of its natural resources. On May 29, 1982, the park was reopened to the public after being close for a five-million-dollar, three-year renovation. All old facilities were completely removed, and new designs were built.



## THE SILO

The Wind Creek Silo, the park's most iconic landmark, was constructed in 1915 by farmer Sid Hertzfield as a storage to store the bounty of grain he produced on his farm. When Martin Dam was built, the backwaters flooded the farmland, but conveniently stopped at the base of the silo. Now, The Silo serves as Wind Creek State Park's landmark observation tower. For the thousands of visitors who enjoy the sweeping views of Lake Martin from the tower, few realize that they are standing on an agricultural relic that is over 100 years old!

# PLAYTIME AT WIND CREEK STATE PARK

## Fishing Pier

Fisherman of all skill levels can hook the perfect catch at Wind Creek! Bluegill, crappie, largemouth bass, smallmouth bass, and striped bass are just a few of the species that inhabit Lake Martin's waters! Fishing licenses are required to fish within Wind Creek State Park (sold at WCSP Marina Store).



## Archery Park

Wind Creek State Park features an onsite archery range, open during park day use hours. Shooters must supply their own bows and arrows, and use of the range is free with paid park admission and for overnight guest.

## Putt-Putt

This miniature golf course provides 18 holes designed from local area attractions. There are putters for all sizes.

### Hours

Tuesday-Saturday: 2:00 pm-8:00 pm  
(weather permitting)

### Prices

Ages 6 to 13: \$3/Per

Ages 14 and up: \$5/per

\*Day use fees apply to non-campers\*



# WIND CREEK BOAT RENTALS

Enjoy the crystal-clear waters of Lake Martin on one of Wind Creek State Park's rentable boats, available at the Marina Store. Wind Creek offers a rental fleet of bass boats, pontoon boats, fishing pontoon boats, and motorized and nonmotorized jon boats. We even feature a selection of pet-friendly watercraft so that your furry friend can come along for the ride! Boats are non-reservable, with all units accessible as first come first served. A vessel license or proof of a boater safety course is required to rent the watercraft without an onsite boater safety test.





# SCREAMING EAGLE ZIPLINE CANOPY TOURS AT WIND CREEK



Are you ready to experience the tree trek high in the trees with amazing views of Lake Martin? At Wind Creek Aerial Zip Line Adventures, you and the family now can enjoy great scenery, thrilling zip lines and some cray fun suspension bridges as you hike through the trees at Wind Creek State Par! Experience heights from 20 to 70 feet in the are and line lengths from 200 to 750 feet long! Reservations are required to take the tour, please call 256-596-3081 for more information and to book a tour!

# ROCKIN' K GUIDED TRAIL RIDES

Rockin' K LLC offers guided trail rides on horse back for groups of up to 4 riders. Guided trail rides wind through the trails of Wind Creek State Park and along the shores of Lake Martin.

## Pricing Info:

1 hour guided trail ride - \$45 / Per Person

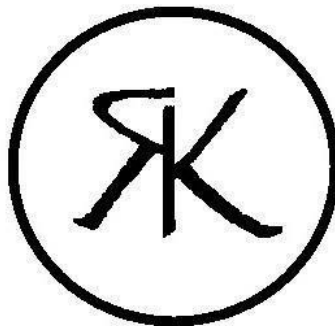
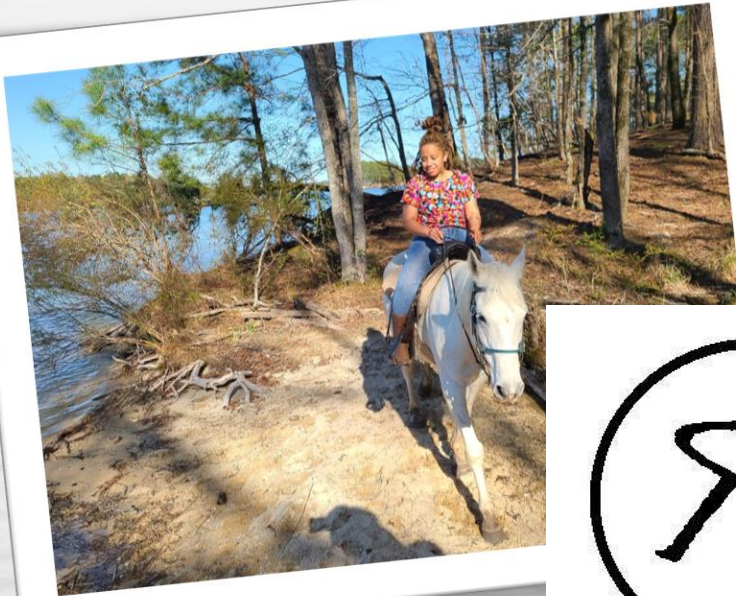
2 hour guided trail ride - \$85 / Per Person

## Requirements:

Must be at least 8 years of age

Must be under 230 lbs.

Rockin' K operates by reservations only. To make a reservation, please call 334-324-3537



# ACCOMMODATIONS



## CAMPSITES

Check-in is 4pm or earlier if available, and **check-out is 2pm**. A late check-out may be requested, and if available, it will be provided. A late check-out fee will apply. Base campsites for 1-4 persons have water and 20/30 amp hook-ups, picnic table, and grill. Other amenity fees are waterfront, sewer hook-up, 50 amp/cable premium, or a combination of each.

Prices vary according to campsite amenities, weekends and holidays, and seasons. Please visit <https://www.alapark.com/parks/wind-creek-state-park/camping> to view specific rates and add-on charges. **Campground and cabin visitors are required to register their vehicle and are charged a fee per vehicle.**

## CAMPING CABINS

Check-in is 4pm or earlier if available and **check-out is 11am**.

Prices vary from cabins 1-3 which are pet friendly (see add on charges) to cabins 4-7 and also vary on weekends and holidays.

Please visit <https://www.alapark.com/parks/wind-creek-state-park/camping-cabins> to view specific rates and add-on charges. **Campground and cabin visitors are required to register their vehicle and are charged a fee per vehicle.**

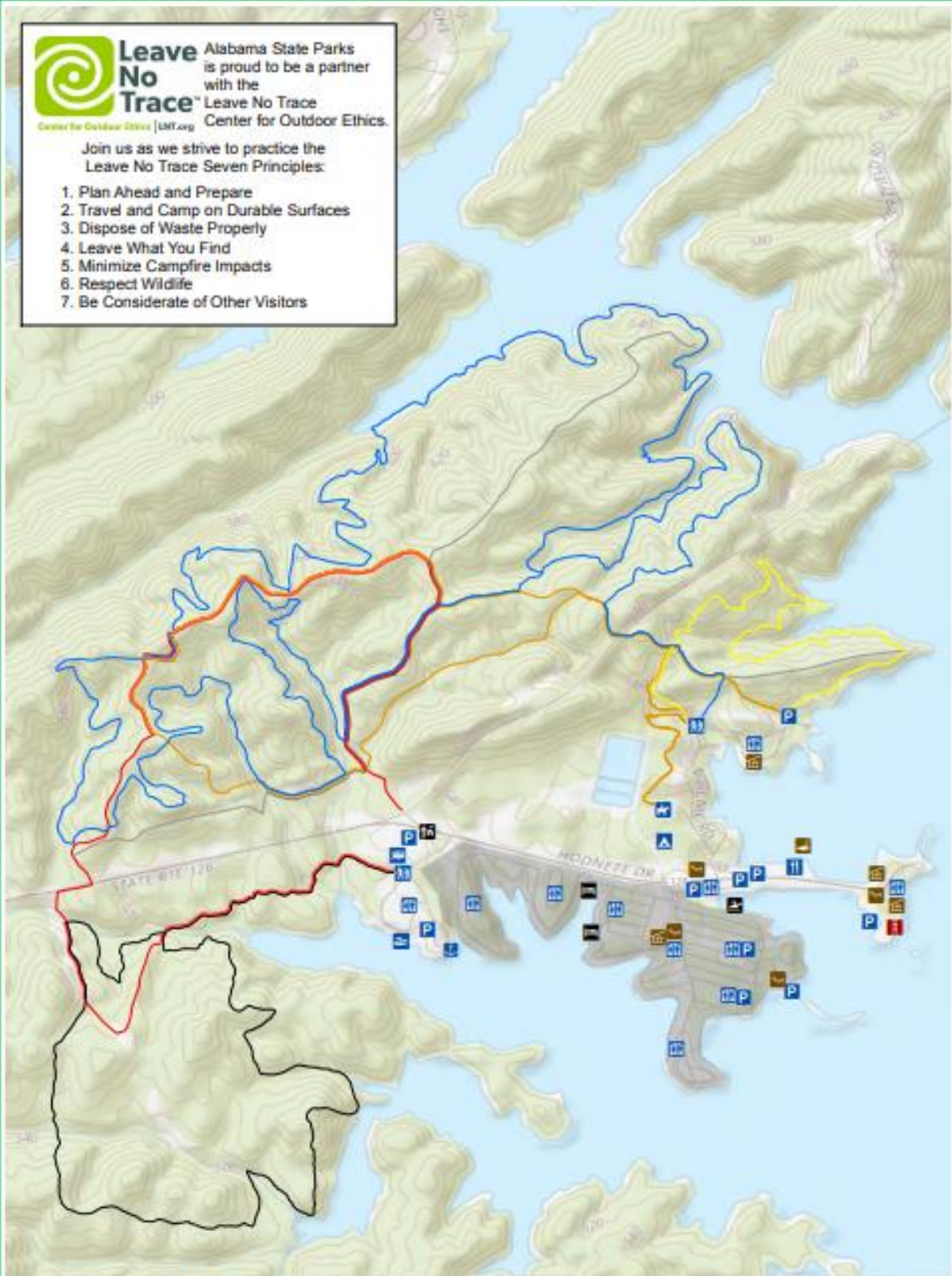


**Leave No Trace**  
Alabama State Parks is proud to be a partner with the Leave No Trace Center for Outdoor Ethics.

Center for Outdoor Ethics | lnt.org

Join us as we strive to practice the Leave No Trace Seven Principles:

1. Plan Ahead and Prepare
2. Travel and Camp on Durable Surfaces
3. Dispose of Waste Properly
4. Leave What You Find
5. Minimize Campfire Impacts
6. Respect Wildlife
7. Be Considerate of Other Visitors




# Wind Creek

## ALABAMA STATE PARKS

4325 Alabama Highway 128  
Alexander City, Alabama 35010

(256) 329-0845 • [www.alapark.com](http://www.alapark.com)

- Bathroom
- Boat Launch
- Camping Storage
- Marina Store/Laundry
- Concessions
- Equestrian
- Camping
- Parking
- Fishing Pier
- Picnic
- Playground/Ballfield
- Cabin
- Registration Office
- Swimming Area
- Silo
- Campground

**Multi-Use Trails (mileage)**

- Blue Trail (15 mi)
- Orange Trail (5 mi)
- Reunion Trail (3.8 mi)
- Speckled Snake Trail (3 mi)
- Campfire Trail (1.8 mi)
- Cut Off Road

Information presented on this map is for reference, and subject to change without notice. Use and to park signage and other markers. In case of emergency, dial 911.



# Welcome to Wind Creek State Park

Located south of Alexander City on Alabama Highway 128, Wind Creek State Park is best known for its public access to the 41,500 acre Lake Martin and its fantastic campground of nearly 600 sites. Wind Creek's 1,445 scenic acres hug the shoreline of beautiful Lake Martin making the park an angler's paradise, while also offering a great place to hike, bike, horseback ride, bird, geocache, and so much more.

## Wind Creek Trail System

Trails at Wind Creek State Park offer many opportunities to see native plants and wildlife like oakleaf hydrangeas, ferns, dogwood, white-tailed deer, squirrels, turkey, several species of woodpeckers, tanagers, warblers, ducks, and much more. The trails wind over hardwood ridges and through tall pines down the shoreline, offering spectacular views of Lake Martin. All trails are open to hikers, bikers, and horseback riders. *Bikers yield to hikers; hikers and bikers yield to horseback riders.*



### Equestrian Trailhead

For visitors enjoying trails by horseback, there is an equestrian trailhead adjacent to the equestrian camping area. Riders may also off-load at the Reunion Trailhead near the Marina, but may not ride between the two areas outside of the trail system.

### Jeff Reed Horse Trail (Orange and Blue Trails)

The Orange and Blue trails are approximately 20 miles long when combined, and can be utilized by all trail users. The Orange Trail is 5 miles and the Blue Trail is 15 miles, and both trek through a mixed pine-hardwood forest and along a stream. There are plenty of wildlife watching opportunities and beautiful views of Lake Martin.

### Campfire Trail (Yellow)

This trail is 1.8 miles long and traverses both mixed hardwood forest and intermittent pine. Midway up the trail, a series of rock outcroppings is bordered by an abundance of ferns. Toward the end of the trail, a small stream bisects the path leading south. During the spring, dogwood, buckeye, and oakleaf hydrangea paint the hardwood ridges with brilliant color. This trail is primarily rated as moderate with several steep areas, and offers opportunities to connect to the Blue and Orange trails.

### Speckled Snake Trail (Black)

Located in the south of Highway 128, this trail is 3 miles in length and winds through mixed pine and hardwood forest. There are 2 points that take you near the lake where you might catch a glimpse of a vulture or eagle soaring in the distance.

### Alabama Reunion Trail (Red)

This moderate to difficult trail is 3.8 miles in length and is bisected by Highway 128. Several features can be noted including an old home site on the northern half, picturesque hardwood bottoms, stands of longleaf pine, and an abundance of native plants and wildlife.

### Hiking Tips

Wear appropriate clothes and footwear for the season. Tennis shoes and hiking boots are recommended no matter what terrain. Pack plenty of water and snacks in your day pack. Take a trail map or ask for directions before you go. Stay on the trail. Consider the physical requirements of the trails and recognize your limits. Trails close at sundown, so allow time to finish your hike. Watch your step; be aware of rocks, roots, and stumps that line the terrain.

## Orienteering at Wind Creek

Orienteering is a skill which allows a person to navigate to points in a landscape using a map and a compass. In the sport of competitive orienteering, the winner is the person who finishes the course in the shortest time. Wind Creek State Park is proud to have a permanent orienteering course courtesy of the Vulcan Orienteering Club and Josh Sumner, Boy Scout Troop 924.

### Wind Creek Permanent Orienteering Course Information:

For more information about orienteering and the park's permanent course, visit [www.vulcanorienteering.org](http://www.vulcanorienteering.org), and select the Orienteering tab at the top of the page. Information about the course can then be found under Permanent O-Courses.



4325 Highway 128  
Alex City, AL 35010  
(256) 329-0845  
[www.alapark.com](http://www.alapark.com)

**In case of emergency, dial 911**

## Alabama State Parks Dirt Pass

Do you want to support the trail system at Wind Creek State Park? Join the Dirt Pass Trail Crew program at the park office, and your donation will go directly for use towards trail resources.



## Campground

Wind Creek is one of the largest state-operated campgrounds in the United States with 586 sites on 320 acres, all with water and electrical hook-ups. There are 268 sites with sewer hook-ups and 157 waterfront sites. Bathhouses are located throughout the campground with two laundry facilities.

### Premium Campsites

There are 39 premium sites featuring waterfront access, 50 amp electrical, sewer, and TV service. Three of these sites are handicapped accessible.

### Equestrian Camping

There are 20 equestrian campsites with 30 amp electrical and water hook-ups. These sites are available on a first-come, first-served basis for campers needing to attend to horses.

Check-in time is 4:00 pm and check-out time is 2:00 pm for all campsites. For reservations, call 256-329-0845 or book online at [www.alapark.com](http://www.alapark.com).

## Camping Cabins

Enjoy the scenic beauty of Wind Creek with the comforts of home in one of seven Camping Cabins located in the campground area. All cabins are non-smoking, and are furnished with central heat and air, microwave, coffee maker, toaster, and small refrigerator. A picnic table and grill are provided for each cabin. Cabins 1, 2, and 3 are dog-friendly.

**Cabins 1 and 3** are 16' x 24' and are furnished with two sets of bunk beds, queen sleeper sofa, dining table and chairs, kitchenette, and one bathroom. These cabins sleep 6 people.

**Cabin 2** is 14' x 24', handicapped accessible, and furnished with one twin bed, one set of bunk beds, dining table and chairs, kitchenette, and one bathroom with accessible shower. This cabin sleeps 3 people.

**Camping Cabins 4, 5, 6, and 7** are 20' x 32' and are furnished with two queen beds, sleeper sofa, dining table and chairs, kitchenette, and one bathroom. These cabins sleep 6 people.

Check-in time is 4:00 pm and check-out time is 11:00 am for all cabins. For reservations, call 256-329-0845 or book online at [www.alapark.com](http://www.alapark.com).

## Day Use Area

Wind Creek State Park offers the perfect setting for family recreation and relaxation, and has activities for visitors of all ages.

### Picnic Area and Picnic Pavilions

Picnic tables and grills are available on a first-come, first-served basis. Three picnic pavilions are available for rent, and are popular for family reunions, birthday parties, informal business retreats, and casual weddings or receptions. Each pavilion accommodates approximately 60-80 guests. Pavilions 1 and 2 are located in the south picnic area near the Silo. Pavilion 3 is located in the north picnic area of the park.

### Beach Area

Enjoy swimming in Lake Martin and relaxing on the large sandy beach area. Nearby bathhouse available.

### Fishing

Lake Martin encompasses 41,500 acres with more than 700 miles of shoreline. Wind Creek State Park is a great access point to the lake, and offers a 210-foot fishing pier that is open 24 hours. Alabama fishing licenses can be purchased at the marina store, or anytime by phone at 1-888-848-6887.

## Marina

Live bait, tackle, hunting and fishing licenses, firewood, RV and boat supplies, variety of floats, and other supplies are available at the marina store. Boat slips are available for rent on a daily or monthly basis. Store hours are 8:00 am to 4:00 pm. Come by boat or land. Gas dock available.

### Boat Launch

There are two boat ramps available for use near the Marina. The boat launch fee is \$5 per day.

### Boat Rental

Bass boats, jon boats, and pontoon boats are available for rent. All boat renters are responsible for all Alabama boating laws. All boats must be returned with a full tank of gas. For more information or reservations, call 256-329-0845.

# THE 7 PRINCIPLES OF LEAVE NO TRACE

Use these principles to continue our efforts of keeping our public lands wild, and reducing human impact on these lands!



## PLAN AHEAD AND PREPARE

Know before you go! Check the weather, local regulations, and trail conditions. Know your group's abilities and how to use the gear you carry.

## TRAVEL AND CAMP ON DURABLE SURFACES

Only use established trails and sites. Know the local camp regulations and disperse your use in primitive areas.



## DISPOSE OF WASTE PROPERLY

Do not leave behind banana, orange, or apple peels. Pack out all garbage, including hygiene products. Know how to properly dispose of human and pet waste, toilet paper, and soapy water.

## LEAVE WHAT YOU FIND

Do not collect natural items or move them. Be aware of local invasives and prevent their spread through transportation. Help preserve historical or cultural sites.



## MINIMIZE CAMPFIRE IMPACTS

Know your local campfire and stove regulations. Use branches you can easily break, and completely burn out or extinguish fires. Do not cut green material from trees.

## RESPECT WILDLIFE

Use the "rule of thumb". Avoid wildlife during sensitive times. Use proper food storage procedures and keep pets under control.

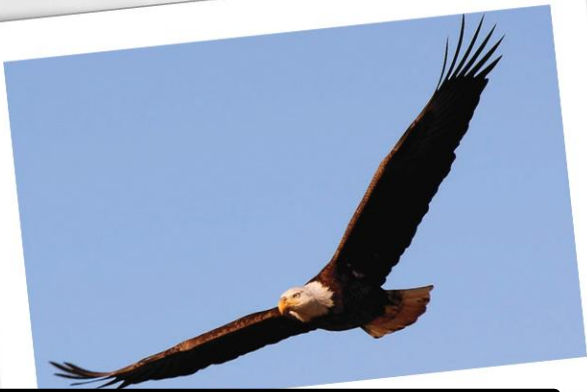


## BE CONSIDERATE OF OTHER VISITORS

Use the Right of Way rules. Keep pets on leash at all times, and camp at a distance from others. Use quiet voices and be respectful with the use of electronics, music, and drones.

For more information visit: [www.LNT.org](http://www.LNT.org)

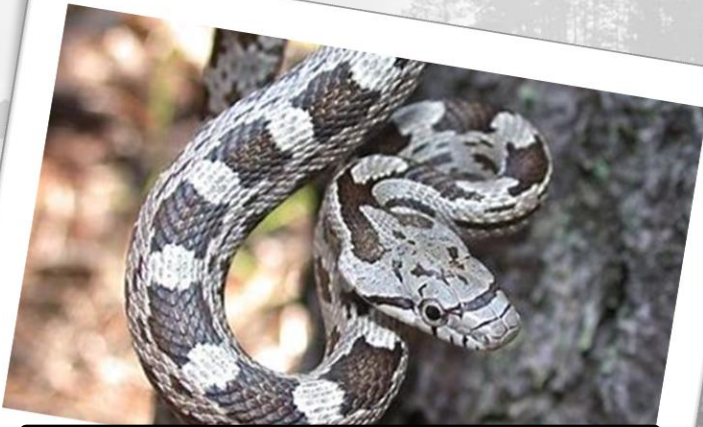
# WATCHABLE WILDLIFE



**Bald Eagle (*Haliaeetus leucocephalus*)**



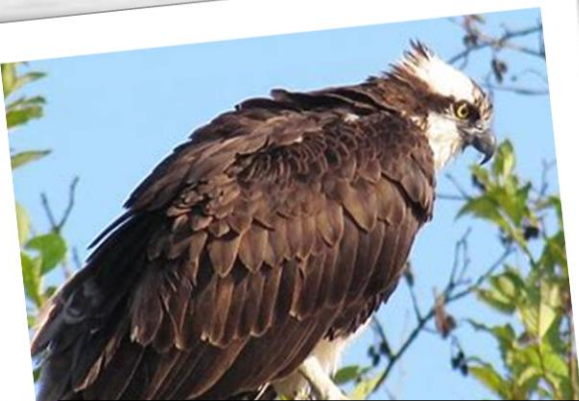
**Great Blue Heron (*Ardea herodias*)**



**Gray Ratsnake (*Pantherophis spiloides*)**



**Summer Tanager (*Piranga rubra*)**



**Osprey (*Pandion haliaetus*)**



**Red Fox (*Vulpes vulpes*)**

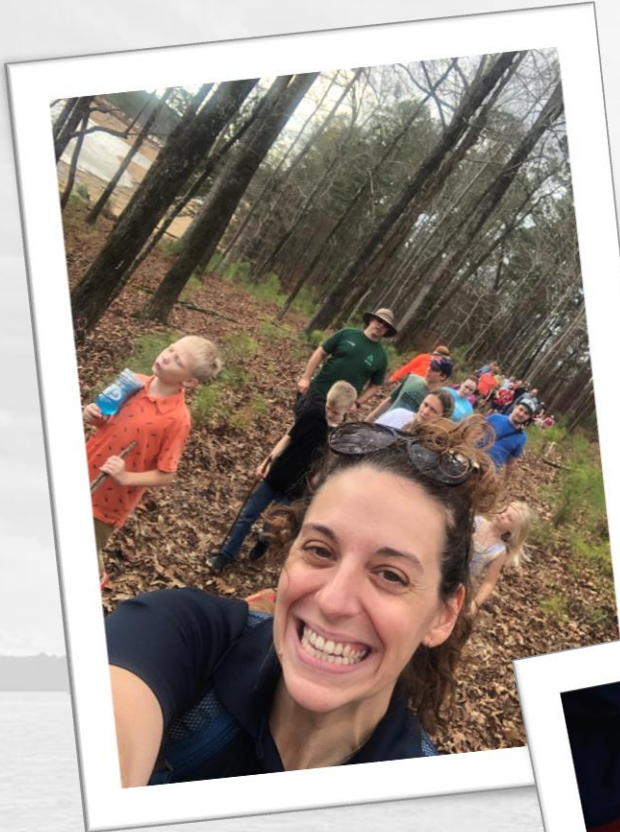
# WIND CREEK RANGERS



Wind Creek State Park is here to serve you! And no one will work harder to make sure that you have a fun and SAFE time in the park than Wind Creek's rangers! These hardworking law enforcement officers are always ready to help, no matter what you might need! And they are always on the lookout for "Safety Superstars" in the park. Rangers love to share these Safety Superstar Coupons with our young guests that we see exemplifying exceptional safety in the park (riding a bike responsibly, throwing away litter, etc.). So, if you see one of our rangers in the park, make sure to give them a wave!



# NATURE PROGRAMS



Get to know Wind Creek State Park through our family-friendly nature programs, led by Wind Creek's interpretive staff. Programs are offered weekly year-round and suitable to guests of all ages. Topics include guided hikes, birdwatching, tree identification, nature art, and more!

For more information on Wind Creek State Park programming:

Alapark: [Park Events](#) | [Alapark](#)

Facebook: [\(5\) Wind Creek State Park-Alabama](#) | [Facebook](#)

# WIND CREEK ANNUAL EVENTS



## SPRING FEST

Spring has sprung at Wind Creek State Park, and blossoms, butterflies, and birdsong are all around! Come and experience the magic of springtime next to the tranquil shores of beautiful Lake Martin!

\*Spring Fest will be hosted the weekend before Easter annually

## FOURTH OF JULY WEEKEND

Celebrate the Fourth of July at Wind Creek State Park! Enjoy campsite decorating contests, a Fourth of July Parade, flag decorating, and more as you ring in the holiday lakeside on Lake Martin!

\*Fourth of July Festivities occur around Fourth of July Holiday



## WIND CREEK FALL FESTIVAL

The leaves are bright, the jack-o-lanterns are lit, and spooky season has fallen upon Wind Creek State Park. Enjoy trick-or-treating, a costume parade, campsite decorating contest, and much more during this fun and family-friendly weekend!

\*Wind Creek Fall Festival will be hosted on the second weekend of October annually



# LOCAL ANNUAL EVENTS

## SUN/JAZZ FEST

For more than a decade, lovers of jazz and blues in search of a music festival need look no farther than Alexander City. The annual free event features two nights of great musical acts and draws crowds from all over the state and country.

## FIREWORKS AT THE AMP

The annual Fourth of July fireworks show is now being viewed from the Lake Martin Amphitheater. Russell Lands has elected to center the celebration around the amphitheater to reduce the risk of injury created by heavy boat traffic around the fireworks.

## DOWNTOWN FARMERS MARKET

JUNE - OCTOBER

SATURDAY MORNINGS | 7 - 11

Main Street Alexander City brings you the Farmer's Market, showcasing the best that area growers have to offer, including fresh fruits and vegetables, plants, baked goods, breads, and vendors. Rain or shine at the fountain on Broad Street.

## OKTOBERFEST

The annual Oktoberfest is sponsored by the Alexander City Parks and Recreation Department at the Charles E. Bailey, Sr. Sportplex. This annual fall festival brings vendors with unique and traditional gifts, a variety of food, musical entertainment, custom car and truck show, and an area especially designed for children.

## HOLIDAY OPEN HOUSE

The Annual Holiday Open House is held the second Sunday in November with local shops opening during the hours of 1:00 pm and 4:00 pm to emphasize the beginning of the shopping season. Walk from store to store and get your decorating items and gift ideas along with those special items on your holiday list!

## CHRISTMAS IN THE PARK

Local businesses and residents participate in the annual Christmas in the Park. You can ride through the Charles E. Bailey, Sr. Sportplex and see unforgettable Christmas displays throughout the park.

## TYKES IN TRUCKS

A family-oriented event for kids of all ages to enjoy looking and inspecting all types of trucks.

# SUPPORT YOUR ALABAMA STATE PARKS

Alabama State Parks have provided wild, rustic, and scenic spaces for over 80 years. With your help and support we can provide and improve so much more in your Alabama State Parks. Here are a few ways that you can support your state parks.

## Visit a Park

Many of Alabama's best natural wonders are nestled away in one of the 21 Alabama State Parks. Adventure, excitement, wonder and beauty await you in a state park

## Gift Cards

Looking for a gift for the person who has everything? Share an Alabama State Parks adventure by purchasing a State Parks Gift Card. Gift cards are redeemable in all Alabama State parks and can be used to purchase, food, golf, lodging, camping, and in gift shops. Purchase your gift card in the Mountain Store or online.

<https://www.alapark.com/alabama-state-parks-gift-cards>

## Make a Donation

The Alabama State Parks Foundation hosts a community of people who love our State's parks. A philanthropic partner of the Parks Administration, the Foundation seeks gifts that will support and enhance park programming, parks facilities, and parks experiences. Members of the Foundation are people dedicated to building and sustaining a great, statewide park system. <https://asparksfoundation.org/our-mission>

## Purchase a Car Tag

Simply request an Alabama State Parks car tag during the renewal procedure and 80% of your money will go directly to help fund the Alabama State Parks (20% goes to normal administrative fees).

<https://revenue.alabama.gov/motor-vehicle/license-plateinformation/specialty-license-plates-all-vehicles/state-parks/>

## Volunteer

State parks are always looking for volunteers. If you are interested in volunteering at Wind Creek, please call 256-329-0845.

# LOCAL ATTRACTIONS

## [LAKEWINDS GOLF COURSE](#)

This 18-hole public golf course is located 5-6 miles from Wind Creek State Park. Directions: Take 280 East towards Auburn, Alabama turn right a short distance after you cross the river bridge. (on County Road 40).

## [HORSESHOE BEND NATIONAL MILITARY PARK](#)

The 2,040-acre National Military Park is dedicated to the memory of U.S. Soldiers and Creek Nation Indians who died in the Battle of Horseshoe Bend on March 27, 1814. The visitor center and museum depicts the period of the battle and explains the equipment used by the soldiers and Creek Indians. The park is located between New Site and Dadeville on Highway 49 South.

## [LAKE MARTIN AMPHITHEATER](#)

The Amphitheater is formed on a bluff overlooking Lake Martin, just off of Highway 63 near Kowaliga Point by Russell Lands. The site has a stage area and grass seating with a capacity of more than 2,500 patrons. As an open-air site, the Amphitheater overlooks the Big Kowaliga Basin, one of the most beautiful areas on Lake Martin.

## [CHILDREN'S HARBOR](#)

The beautiful campus located 15 miles south of Alexander City, Alabama, on Highway 63, is built around a picturesque New England seaside village motif and features the Plymouth Lighthouse and a charming little early American church, Children's Chapel. A replica of the Plymouth Lighthouse which is located on Providence Point at our Lake Martin campus, symbolizes our goal of helping children and families find their way through the treacherous waters in which they sometimes find themselves.

## [RUSSELL CROSSROADS](#)

This historic town center, located 11 miles south of Hwy 280 on Hwy 63, is in the heart of Russell Lands communities. With its rustic hometown feel, it boosts Catherine's Market and the Spring House restaurants as its main attractions, as well as a blacksmith, stables, town green, adventure center and more than 80 miles of scenic, picturesque trails with shoreline views of Lake Martin.

For more information on local attractions, check out:

Lake Martin Tourism Association:

[Lake Martin – Welcome to Alabama's Freshwater Coast \(explorelakemartin.com\)](#)

Tallapoosa County Tourism:

[Travel Guide in Lake Martin AL | Tallapoosa County Tourism](#)

## President's Message

The Alabama State Parks Foundation is a community of people who love Alabama's marvelous parks.

Our parks dot the landscape of Alabama Beautiful. From the seashores of the Gulf to the verdant hills of Appalachia, the parks welcome people to their diverse natural settings. For generations, families have gathered for reunions, hikers tramped our enchanted woodlands, fishermen relaxed on glistening lakes, and people of all ages enjoyed healthy and recreational experiences in our lovely parks.

In January 2018, a group of people from throughout Alabama formed the Alabama State Parks Foundation. The Foundation will be a community of people dedicated to the Parks. I invite you to be one of those people who love our Alabama Parks.

To celebrate the birth of the Alabama State Parks Foundation, you can join others in becoming a "First Friend and Founding Member" of the Foundation. Let us know of your interest. Join a great parks movement of people who support one of our state's precious treasures – Alabama State Parks.

Sincerely,



Dan L. Hendricks, President  
Alabama State Parks Foundation

## First Friends and Founding Members

The Alabama State Parks Foundation was incorporated in 2018. In these first two years of its life, we urge parks lovers to become First Friends and Founding Members of the Foundation.

You will join many other park supporters who give their time and resources to advance our wonderful Alabama State Parks system. First Friends understand the needs of our parks for strong recreational programs, modern facilities, and great staff. By their example of financial support for the parks our First Friends will spread the news about Alabama's marvelous parks.

Of course, we hope that our First Friends make a financial contribution to the Foundation, but if for whatever reason you cannot give money at this time, you may become a First Friend by pledging your time and talent. Depending upon where you live, you can volunteer at a park nearest you.

Visit [asparksfoundation.org](http://asparksfoundation.org) to join us and to donate to our great parks.

First Friends will be the  
foot soldiers of our  
great parks movement

Become a First Friend of the  
Alabama State Parks Foundation today.



Parks for People  
and People for  
Parks.