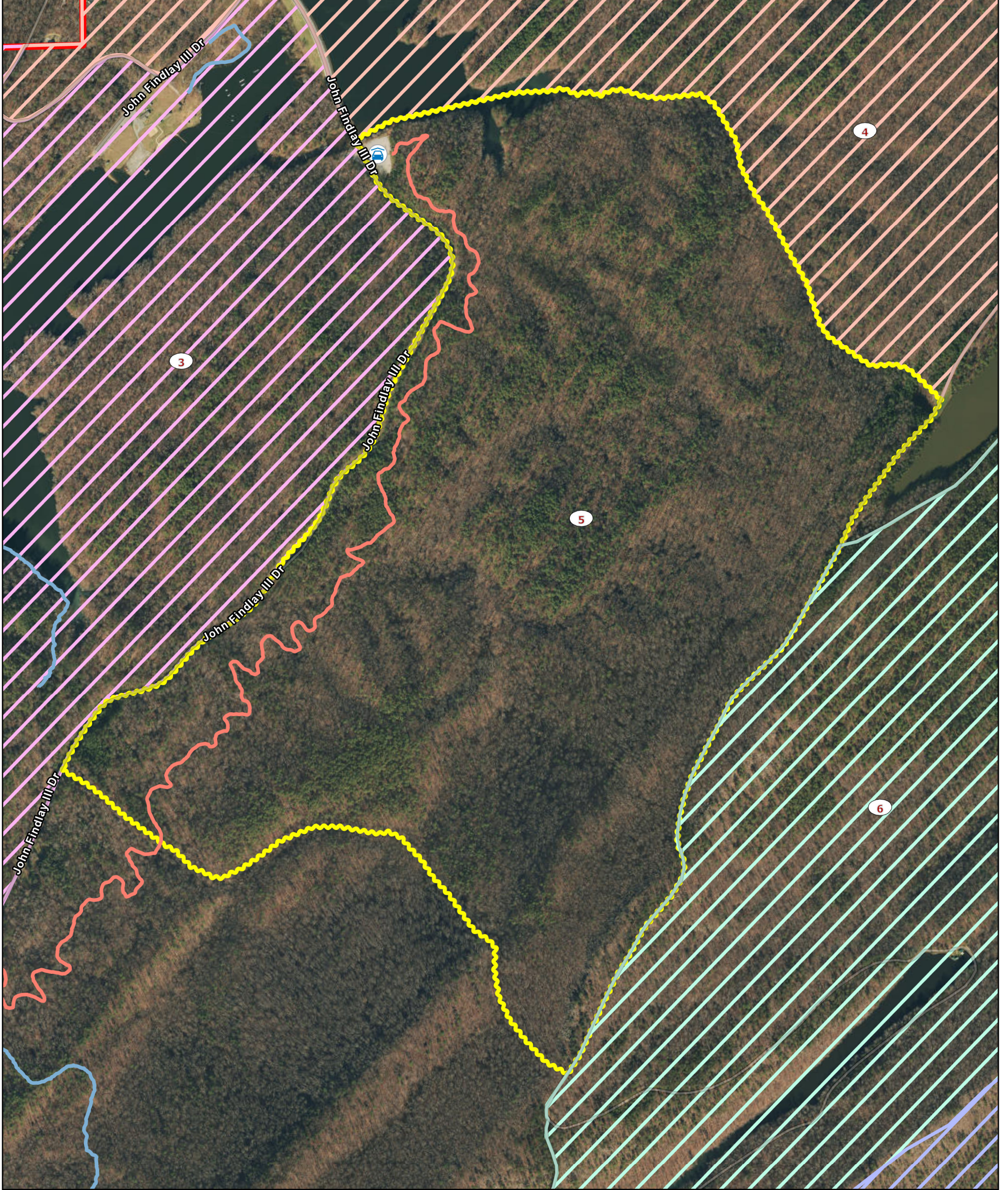
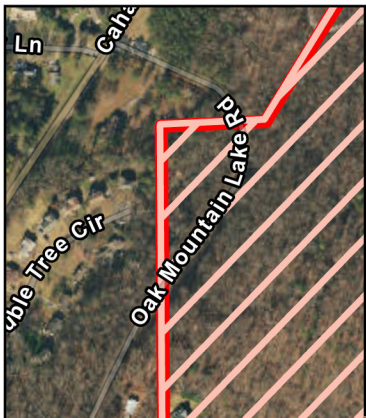


Oak Mountain State Park

SPECIAL OPPORTUNITY AREA



Hunt Unit 5



Trails

- Hiking and Biking
- Hiking
- Biking
- Horseback Riding

Points of Interest

- Archery Park/Check Station



Camping



Parking



Units 6-8 Entrance



Front Entrance Gate

Hunt Units

- ▭ 3 (496 acres)

- ▭ 4 (746 acres)

- ▭ 5 (457 acres)

- ▭ 6 (530 acres)

- ▭ 7 (411 acres)

- ▭ State Park Boundary

DUE TO THE SCALE OF THIS MAP THE ALABAMA DEPARTMENT OF CONSERVATION AND ITS AFFILIATES ASSUME NO RESPONSIBILITY FOR INACCURACIES IN ROAD ALIGNMENTS, CONFIGURATION OF INTERSECTIONS, AND OTHER RELATED DATA.

THIS IS NOT A SURVEY. BOUNDARIES REFLECT INFORMATION PROVIDED FOR HUNTING AT THE DATE OF REVISION. THE ALABAMA DEPARTMENT OF CONSERVATION DOES NOT ACCEPT RESPONSIBILITY FOR ANY INACCURACIES HEREIN. THIS PUBLICATION IS AVAILABLE IN ALTERNATIVE FORMATS UPON REQUEST.

THE DEPARTMENT OF CONSERVATION AND NATURAL RESOURCES DOES NOT DISCRIMINATE ON THE BASIS OF RACE, COLOR, RELIGION, AGE, SEX, NATIONAL ORIGIN, DISABILITY, PREGNANCY, GENETIC INFORMATION OR VETERAN STATUS IN ITS HIRING OR EMPLOYMENT PRACTICES NOR IN ADMISSION TO, ACCESS TO, OR OPERATIONS OF ITS PROGRAMS, SERVICES OR ACTIVITIES.

