

ADDENDUM NUMBER 01

DATE: May 21, 2026

PROJECT: **RICKWOOD CAVERNS STATE PARK – POOL HOUSE**

PROJECT NUMBER: **ASPD PROJECT #: 2025-022-1616**

OWNER: State Parks Division of the ADCNR
64 N. Union Street, Suite 538
Montgomery, AL 36104

ENGINEER: Three Notch Group, Inc.
515 Locust Street
Gadsden, Alabama 35901

TO: Prospective Bidders

This Addendum forms a part of the Contract Documents and modifies the Bidding Documents dated **December 19, 2025 (Plans) and April 28, 2026 (Project Manual)**.

Contractors shall acknowledge receipt of this Addendum in the space provided in the Proposal Form. Failure to do so may disqualify future Bidders.

This Addendum consists of twelve (12) total pages including attachments.

Prebid meeting agenda (minutes) & attendance record attached.

CHANGES TO THE PROJECT MANUAL

1. Section 10 2800 – Toilet, Bath, and Laundry Accessories
 - a. Speedflow Plus by Saniflow will be considered an approved equal subject to requirements of the drawings and specifications.
2. Section 07 7124 – Manufactured Gutters and Downspouts
 - a. Replace this section in its entirety with the attached version. Gutter guards basis of design product noted.
3. Section 07 4114 – Metal Roof Panels
 - a. “Powerseam” by Fabral Metal Wall and Roof Systems will be considered an approved equal subject to requirements of the drawings and specifications.

CHANGES TO THE CONSTRUCTION PLANS

1. Sheet A05.10
 - a. Replace this sheet in its entirety with the attached version.
 - b. Section 2/A05.10: Gutter guards have been added.
 - c. Detail 5/A05.10: Gutter Guards have been added and indicated.

2. Sheet C-302
 - a. New callout in reference to the sanitary sewer lateral “Temporarily tie sewer to the existing septic system, which is to be replaced with either a new septic system or connection to public sewer”

CLARIFICATIONS

1. All questions shall be submitted to Jake Ross (jake.ross@3notch.com) by Friday, May 29, 2026, 11:00 a.m.

CONTRACTOR QUESTIONS / RFI's

1. Can we substitute custom plastic laminate cabinets instead of Solid Plastic Laboratory Casework?
Due to the low durability of MDF and particle board used in the plastic laminate-clad casework spec provided, this will not be considered an approved equal.
2. Was a Geotechnical Evaluation performed? **No Geotechnical Evaluation was performed pertaining to the Pool House project area.**

ISSUED THIS 21st DAY OF MAY 2026


Lance Armbrester, PE

PRE-BID CONFERENCE AGENDA
FOR
FACILITY UPGRADES FOR RICKWOOD CAVERNS STATE PARK
ALABAMA STATE PARKS DIVISION
ADCNR PROJ. NO.: 2022-029-5216

Wednesday, May 13, 2026, 1:00 PM

OPENING AND INTRODUCTIONS

1. **Sign-In Sheet**
2. **Introductions**
 - a. **Owner:** Alabama State Parks Division of the ADCNR
 - i. Dennis Grooms, Construction Manger
 - ii. State Park Staff
 - b. **Civil Engineer & Lead Design Consultant:** Three Notch Group, Inc. (Formerly CDG)
 - i. Lance Armbrester, PE
 - ii. Jake Ross, EI
 - c. **Architect:** Seay, Seay & Litchfield
 - i. Jeff Bazzell, AIA, LEED AP
 - ii. Olivia Smith, ASSOCIATE AIA
 - d. **Structural Engineer:** Day Structures, Inc.
 - i. Jeremy D. Day, PE
 - e. **Mechanical/Plumbing Engineer:** Morris Davis Engineering, LLC
 - i. Hunter B. Davis, PE
 - f. **Electrical Engineer:** Garner & Associates Engineering
 - i. Morgan Garner, PE

GENERAL INFORMATION

3. **Bid Documents:** PDF electronic copies are available via email at no cost to the bidder.
4. **Schedule:** See Invitation to Bid
 - a. **Bid Due Date:** Thursday, June 04, 2026, 2:00 PM CST
 - b. **Bid Opening:** Friday, June 05, 2026, 2:00 PM CST
 - c. **Bid Opening Location:** ADCNR Conference Room (Montgomery, AL)
5. **Instructions to Bidders:** See ASPD Form 5-C
 - a. It is the Contractor's responsibility to make sure bid is complete per the Contract documents (e.g. bid form, bid bond, sub/supplier list, etc.)
 - b. It is the Contractor's responsibility to make sure bids are delivered and received at the designated location on the date and time stated in advertisement for bid or subsequent addenda.
 - c. **Proposal Form:** Use ASPD Form 5-E, along with Attachments "A"- Bid Items & Unit Pricing, provided in the Specification Manual. No alterations shall be made to these forms.
 - d. **Base Bid & Alternate 1**
 - e. **Request for Information:** All questions shall be submitted to Jake Ross (jake.ross@3notch.com) by Friday, May 29, 2026, 11:00 a.m.
 - f. **Addenda:** All Addenda will be issued by Three Notch Group, Inc. and sent to the same

email address used by the bidder to obtain bid documents.

- g. **Award:** The owner intends to announce the bid award to the lowest qualified bidder within 30 days of the bid opening.
- h. **Construction Start Date:** The owner intends to issue a NTP proceed on Tuesday, September 8, 2026 (see Supplemental General Conditions).
6. **Construction Completion Date:** 120 calendar days from the NTP
7. **Liquidated Damages:** \$1000.00 per day
8. **Construction Budget:** The owner may elect to announce an official budget prior to the bid opening.
9. **Site Visits:** Bidders shall thoroughly investigate the project site to fully understand the scope of work required by the Contract Documents. Site visits can be arranged if needed by contacting Jake Ross.

PROJECT OVERVIEW

- Demolition of Existing sidewalk, fencing, and other items
- Construction of a pool house building
- Concrete paths
- Onsite septic system

PRE-BID CONFERENCE ATTENDANCE RECORD

Rickwood Caverns State Park Pool House

ASPD PROJECT #: 2025-022-1616

Alabama Department of Conservation and Natural Resources – State Parks Division

370 Rickwood Park Road, Warrior, Alabama 35180

Wednesday, May 13, 2026, 1:00 PM

NAME	COMPANY OR ORGANIZATION	TELEPHONE	EMAIL ADDRESS
Sid Rickard	Set-Peg, Inc.	256 740 7617	setpeg@jetpeg.com
Grace Wann	Taylor to Miree Construction	205 879 7770	grace@taylor-miree.com
Caleb Lyle	Rogers Building Company	205 399 9763	stacey@rbccontractors.com
Matt Cole	Stilwell Construction	256-759-1710	Matt@huntsville-builders.com
Olivia Smith	SSL Architects	704.594.3070	osmith@sslarch.com
Russ Stone	Coston GC	205-475-3516	russ@costongc.com
John Strozier	Strozier Construction Co,	205 914 8038	jbstrozier@gmail.com
Coles Sullivan	David Acton Building	205 807 5278	wes@actonbuildingcorp.com
Dennis Greaves	SRD	354 604 8288	dennisgreaves@denr.state.al.us
Jake Hill	3 Hotel Group	256-613-4131	
John Clark	Rickwood Caverns	205-335-7509	
Emily Davis	Rickwood Caverns	205 983 0070	emily.davis@denr.alab.gov

SECTION 07 7124

MANUFACTURED GUTTERS AND DOWNSPOUTS

PART 1 GENERAL

1.01 SECTION INCLUDES

- A. Pre-finished galvanized steel gutters and downspouts.
- B. ***Gutter Guards.***
- C. Downspout Boots.

1.02 RELATED REQUIREMENTS

- A. Section 05 5000 - Metal Fabrications: Downspout boots.
- B. Section 07 6200 - Sheet Metal Flashing and Trim.
- C. Section 075423 - Thermoplastic-polyolefin Roofing.

1.03 REFERENCE STANDARDS

- A. AAMA 611 - Voluntary Specification for Anodized Architectural Aluminum 2014 (2015 Errata).
- B. AAMA 2603 - Voluntary Specification, Performance Requirements and Test Procedures for Pigmented Organic Coatings on Aluminum Extrusions and Panels (with Coil Coating Appendix) 2017a.
- C. AAMA 2604 - Voluntary Specification, Performance Requirements and Test Procedures for High Performance Organic Coatings on Aluminum Extrusions and Panels (with Coil Coating Appendix) 2022.
- D. AAMA 2605 - Voluntary Specification, Performance Requirements and Test Procedures for Superior Performing Organic Coatings on Aluminum Extrusions and Panels (with Coil Coating Appendix) 2022.
- E. ASTM A653/A653M - Standard Specification for Steel Sheet, Zinc-Coated (Galvanized) or Zinc-Iron Alloy-Coated (Galvannealed) by the Hot-Dip Process 2020.
- F. ASTM A666 - Standard Specification for Annealed or Cold-Worked Austenitic Stainless Steel Sheet, Strip, Plate, and Flat Bar 2015.
- G. ASTM B32 - Standard Specification for Solder Metal 2020.
- H. ASTM B209 - Standard Specification for Aluminum and Aluminum-Alloy Sheet and Plate 2014.

- I. ASTM B209M - Standard Specification for Aluminum and Aluminum-Alloy Sheet and Plate (Metric) 2014.
- J. ASTM B370 - Standard Specification for Copper Sheet and Strip for Building Construction 2012 (Reapproved 2019).
- K. ASTM D2665 - Standard Specification for Poly(Vinyl Chloride) (PVC) Plastic Drain, Waste, and Vent Pipe and Fittings 2020.
- L. ASTM D4479/D4479M - Standard Specification for Asphalt Roof Coatings - Asbestos-Free 2007 (Reapproved 2018).
- M. CDA A4050 - Copper in Architecture - Handbook current edition.
- N. SMACNA (ASMM) - Architectural Sheet Metal Manual 2012.

1.04 ADMINISTRATIVE REQUIREMENTS

- A. Comply with International Plumbing Code code for size and method of rain water discharge.

1.05 SUBMITTALS

- A. See Section 01 3000 - Administrative Requirements, for submittal procedures.
- B. Product Data: Provide data on prefabricated components.
- C. Shop Drawings: Indicate locations, configurations, jointing methods, fastening methods, locations, and installation details.
- D. Samples: Submit two samples, [____] inch long illustrating component design, finish, color, and configuration.

1.06 DELIVERY, STORAGE, AND HANDLING

- A. Stack material to prevent twisting, bending, or abrasion, and to provide ventilation. Slope to drain.

PART 2 PRODUCTS

2.01 MANUFACTURERS

- A. Gutters and Downspouts:
 - 1. ATAS International, Inc; Water Control System: www.atas.com/#sle.
 - 2. Cheney Flashing Company; [____]: www.cheneyflashing.com/#sle.

3. Drexel Metals Inc: www.drexmet.com/#sle.
4. OMG Roofing Products; [____]: www.omgroofing.com/#sle.
5. SAF Perimeter Systems, a division of Southern Aluminum Finishing Company, Inc; [____]: www.saf.com/persys/#sle.
6. Substitutions: See Section 01 6000 - Product Requirements.

B. Gutter Guards:

1. ***ATAS International, Inc; Basis of Design: www.atas.com/#sle. Or approved Equal.***
 - a. ***Provide removable gutter guards at all gutters.***

C. Scupper and Collectors:

1. ATAS International, Inc; Scuppers and Collector Boxes: www.atas.com/#sle.
2. Substitutions: See Section 01 6000 - Product Requirements.

D. Rooftop Pipe Supports:

1. Miro Industries, Inc.; www.miroind.com

2.02 MATERIALS

- A. Pre-Finished Galvanized Steel Sheet: ASTM A653/A653M, with G90/Z275 zinc coating; minimum 0.02 inch thick base metal.
 1. Finish: Shop pre-coated with PVDF (polyvinylidene fluoride) coating.
 2. Color: As selected from manufacturer's standard colors.
- B. Primer: Zinc molybdate type.
- C. Protective Backing Paint: Zinc molybdate alkyd.
- D. Solder: ASTM B32; Sn50 (50/50) type.
- E. Primer and Solvent for Polyvinyl Chloride (PVC): As recommended by manufacturer.

2.03 COMPONENTS

- A. Gutters: SMACNA square style profile. Size per SMACNA (latest edition and latest NOAA data for project location).

- B. Downspouts: SMACNcole.
- C. Anchors and Supports: Profiled to suit gutters and downspouts.
 - 1. Anchoring Devices: In accordance with SMACNA requirements.
 - 2. Gutter Supports: Brackets.
 - 3. Downspout Supports: Straps.
- D. Fasteners: Galvanized steel , with soft neoprene washers.

2.04 ACCESSORIES

- A. Downspout Boots: Cast iron; ASTM A48. Contoured interior flow design with no boxed corners, weld seams or choke points; include integral lug slots and stainless steel fasteners.
 - 1. Configuration: Offset, Angular or Ninety as required to suite project conditions.
 - 2. Finish: High Performance Organic Finish, AAMA 2604; multiple coat, thermally cured fluoropolymer finish system; color as selected by Architect.
 - 3. Color: Black Gray [RAL #7021].
 - 4. Accessories:
 - a. Cleanout with neoprene gasket and stainless steel tamper-proof screws.
 - b. Manufacturer's standard stainless steel fasteners for mounting onto building wall.
 - c. Flexible shielded rubber adapter for connection to underground drainage pipe or building plumbing.
 - 5. Manufacturer: J. R. Hoe & Sons; 101 Ironwood Rd., Middlesboro, KY 40965: www.downspoutboots.com or approved equal.

2.05 FABRICATION

- A. Form gutters and downspouts of profiles and sizes indicated.
- B. Fabricate with required connection pieces.
- C. Form sections square, true, and accurate in size, in maximum possible lengths, free of distortion or defects detrimental to appearance or performance. Allow for expansion at joints.
- D. Hem exposed edges of metal.

- E. Fabricate gutter and downspout accessories; seal watertight.

2.06 FINISHES

- A. Fluoropolymer Coating: High Performance Organic Finish, AAMA 2604; multiple coat, thermally cured fluoropolymer finish system; color as indicated.

PART 3 EXECUTION

3.01 EXAMINATION

- A. Verify existing conditions before starting work.
- B. Verify that surfaces are ready to receive work.

3.02 PREPARATION

- A. Paint concealed metal surfaces and surfaces in contact with dissimilar metals with protective backing paint to a minimum dry film thickness of 15 mil.

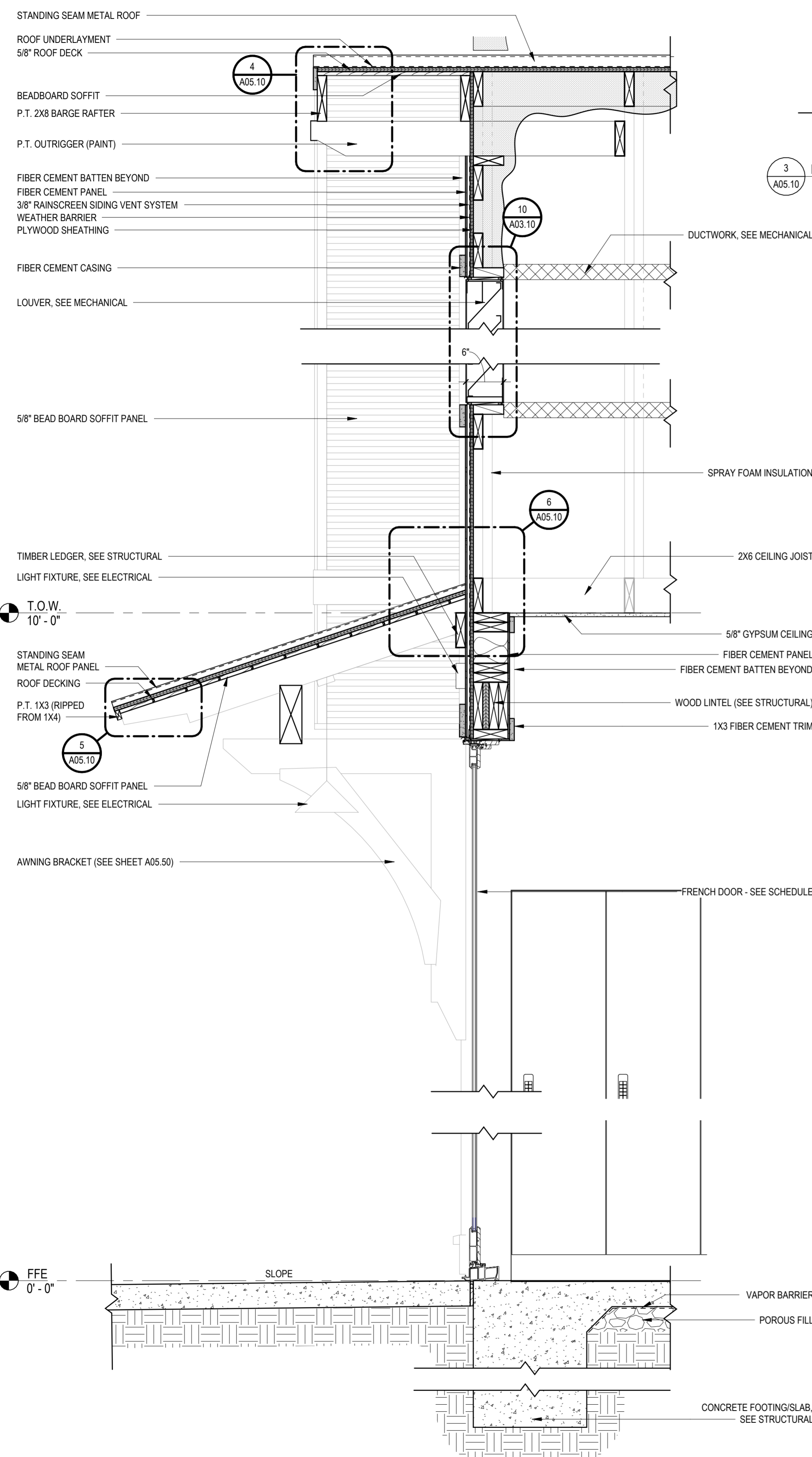
3.03 INSTALLATION

- A. Install gutters, downspouts, and accessories in accordance with manufacturer's instructions.
- B. Sheet Metal: Join lengths with formed seams sealed watertight. Flash and seal gutters to downspouts and accessories.
- C. Slope gutters 1/8 inch per foot .
- D. Connect downspouts to downspout boots at 12 to 18 inches above grade. Seal connection watertight. Secure downspout boots to masonry wall in accordance with manufacturer's recommendations, and written installation instructions.
- E. Connect downspouts to storm sewer system. Seal connection watertight with flexible rubber adapter, type as recommended by downspout boot manufacturer.

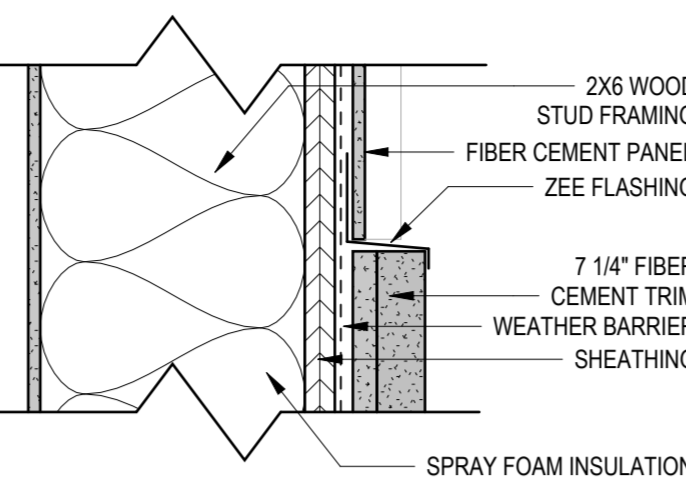
END OF SECTION

This page intentionally left blank

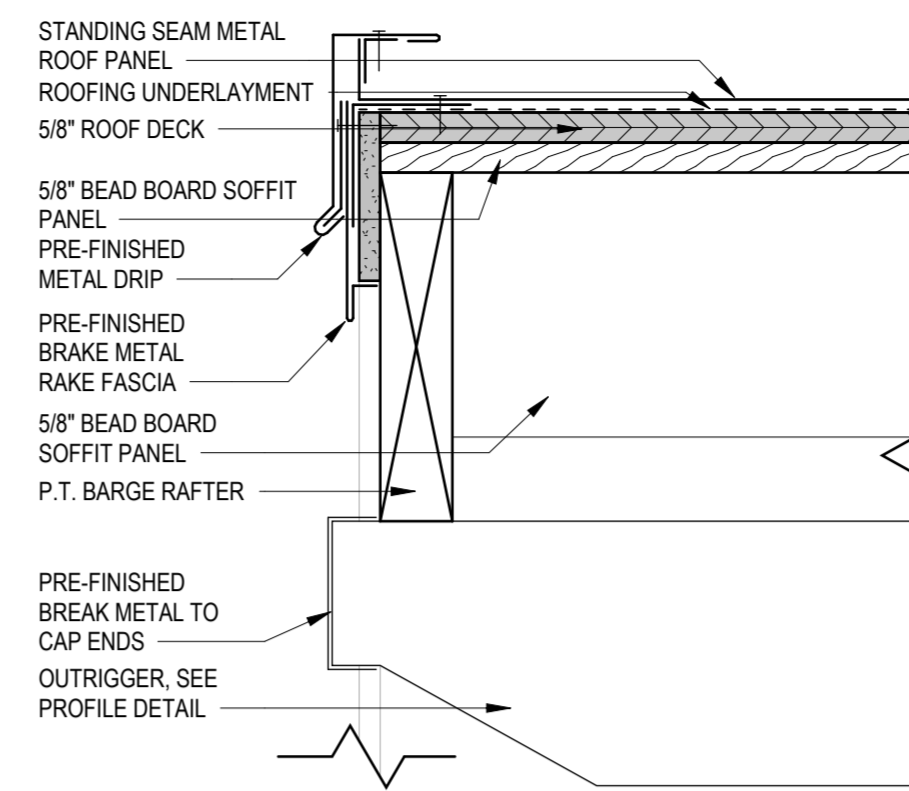
This page intentionally left blank



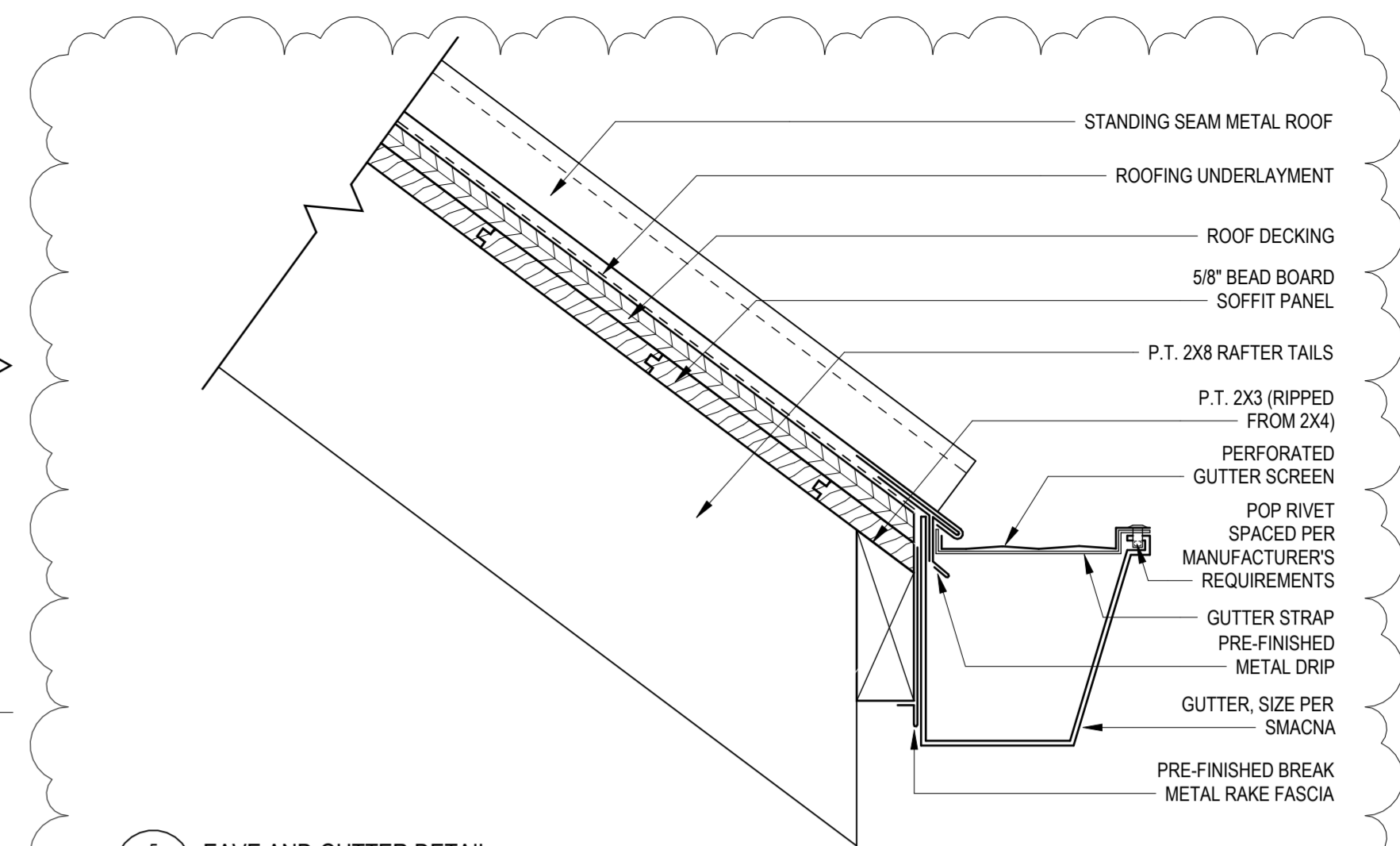
1 LIFEGUARD ENTRANCE WALL SECTION
1" = 1'-0"



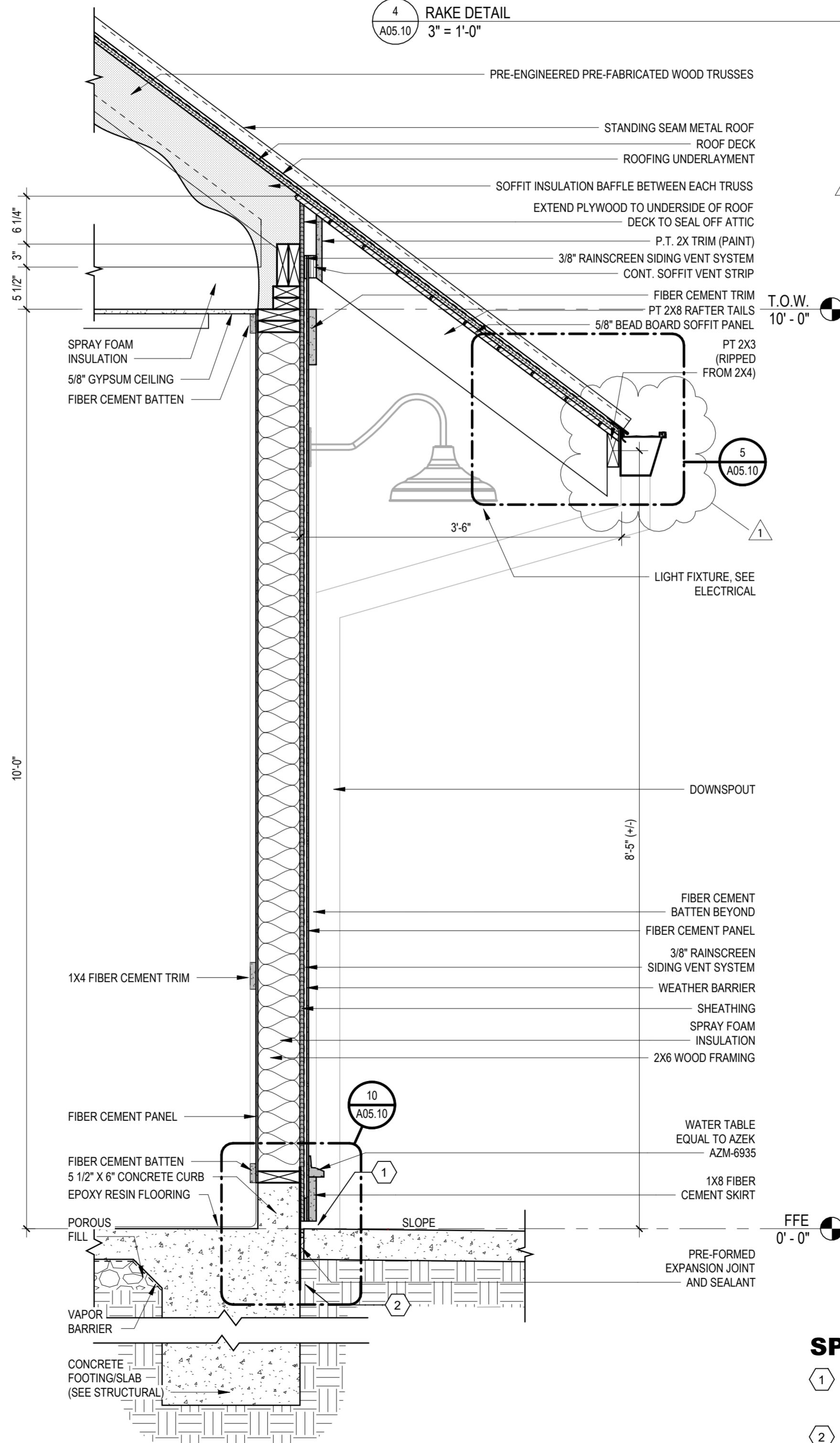
3 FIBER CEMENT TRIM DETAIL
3" = 1'-0"



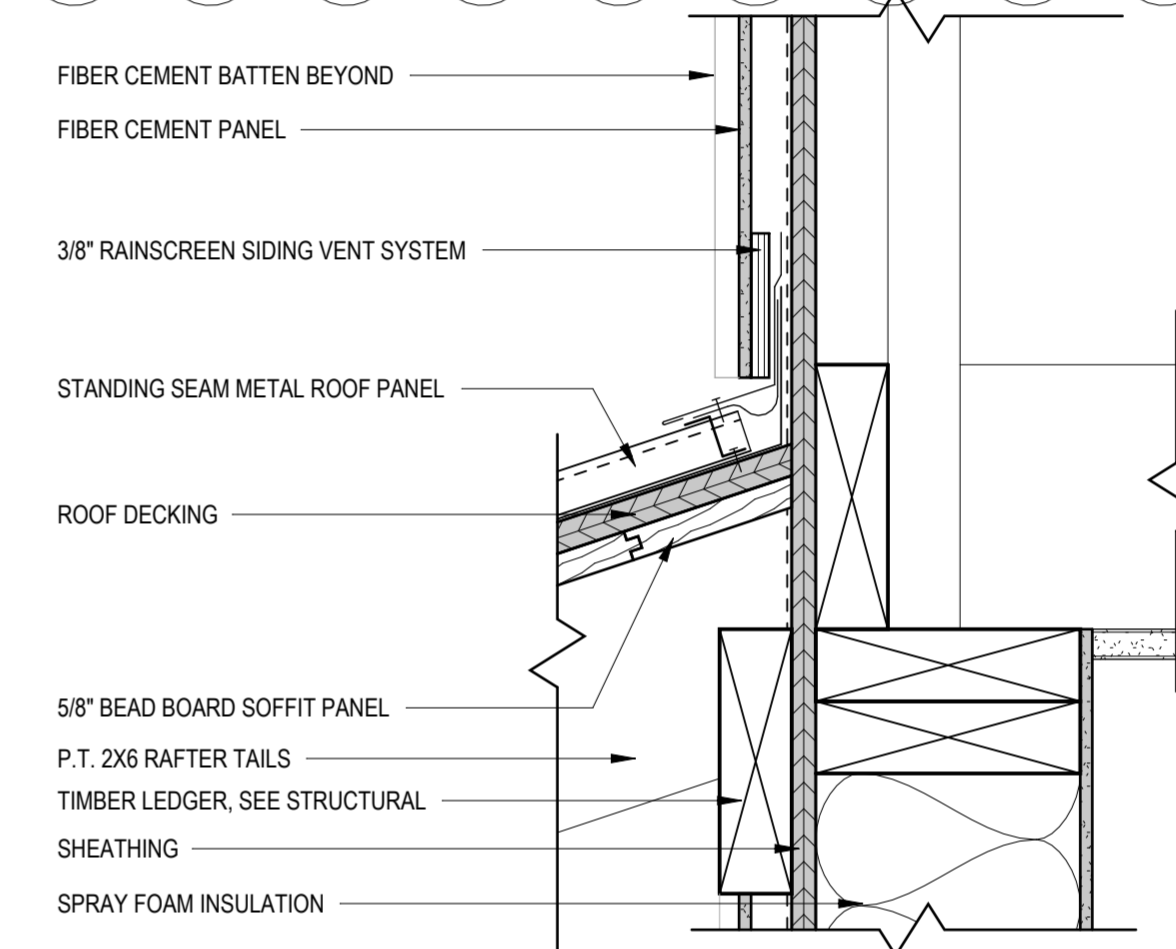
4 RAKE DETAIL
3" = 1'-0"



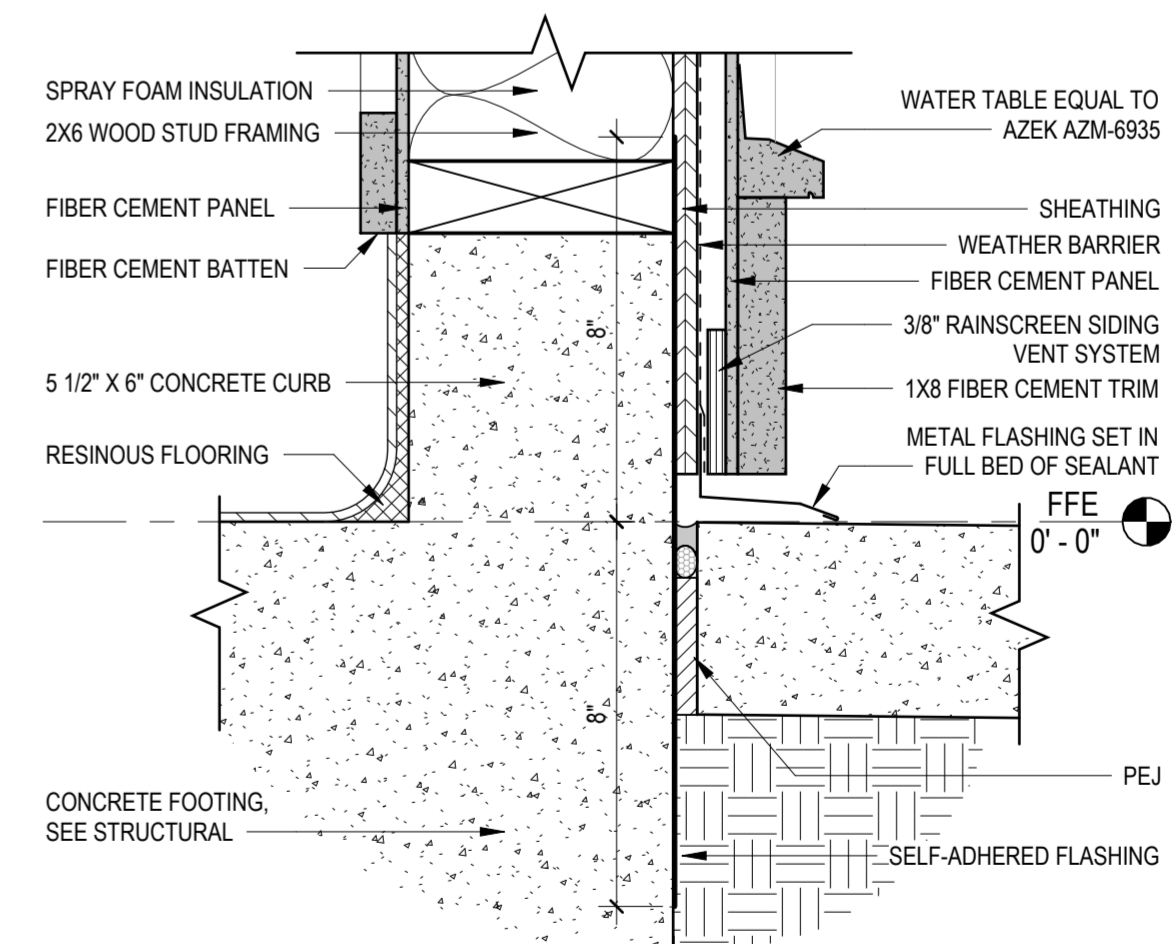
5 EAVE AND GUTTER DETAIL
3" = 1'-0"



2 TYPICAL WALL SECTION
1" = 1'-0"



6 AWNING ROOF TO HIGH WALL TRANSITION
3" = 1'-0"



10 CONTINUOUS FLASHING DETAIL
3" = 1'-0"

SPECIFIC NOTES:

- SET BOTTOM OF FIBER CEMENT SKIRT AT A DISTANCE OFF CONCRETE SIDEWALK AS REQUIRED BY MANUFACTURER.
- INSTALL CONTINUOUS STRIP OF SELF-ADHERED FLASHING AROUND PERIMETER OF BUILDING. FLASHING SHALL EXTEND A MINIMUM OF 8 INCHES ABOVE F.F.E. AND 8 INCHES BELOW F.F.E.

SS&L ARCHITECTS
Auburn | Dothan | Montgomery | Huntsville
www.sslarch.com | 334.263.5162

DATE:	09/05/2025
NO. REVISION/SUBMISSION	01 SCHEMATIC SUBMITTAL
	02 65% SUBMITTAL
	03 95% SUBMITTAL
	04 ISSUE FOR BID
PROFESSIONAL SEAL:	
COA: ECA105	
ADDRESS:	224 BROAD ST., SUITE 201 GADSDEN, AL 35901 PH: (256) 543-9431
THREE NOTCH GROUP	FINAL DRAWING-ISSUE FOR BIDDING
RICKWOOD CAVERNS STATE PARK - POOL HOUSE ADCNR - STATE PARKS DIVISION BLOUNT COUNTY, ALABAMA	
PROJECT NO:	2025002
DATE:	12/19/2025
SHEET NO:	SCALE: AS SHOWN
	AS SHOWN
DRAWING TITLE: WALL SECTIONS AND DETAILS	

Y:\bim\ec2_P\040810020000_D\DESIGN\2025_3\sheet\040810020000.dwg